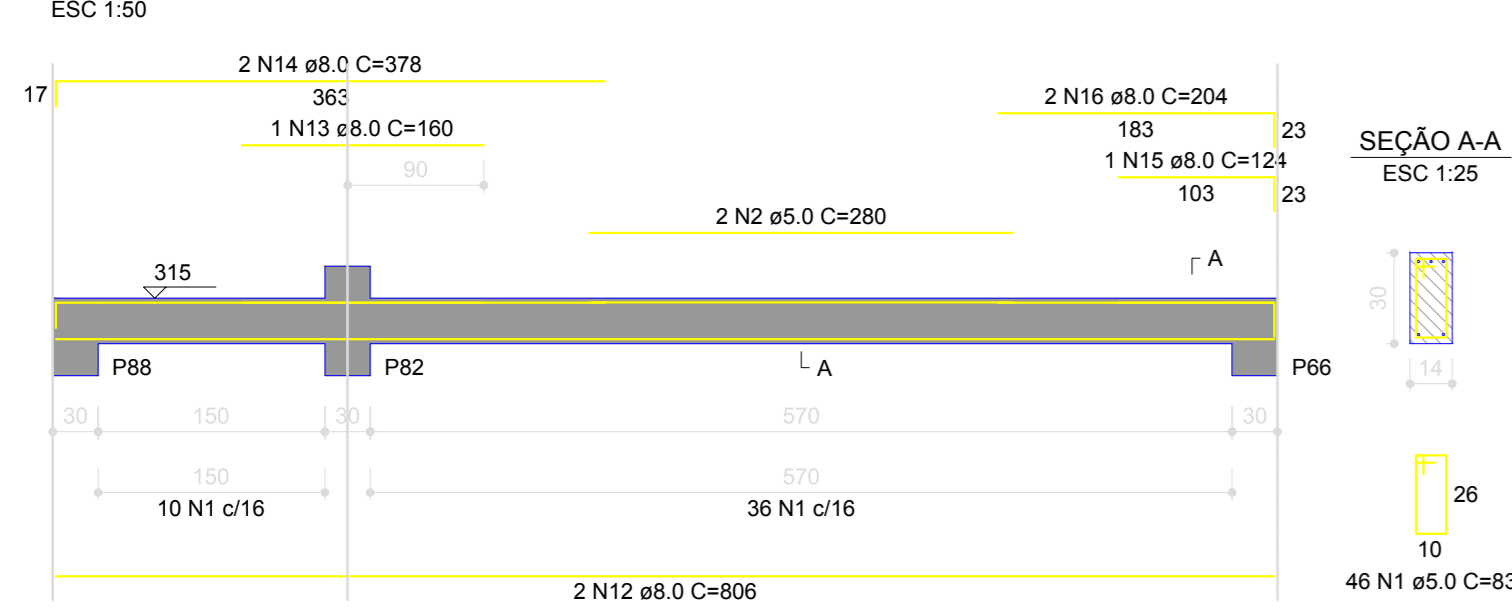
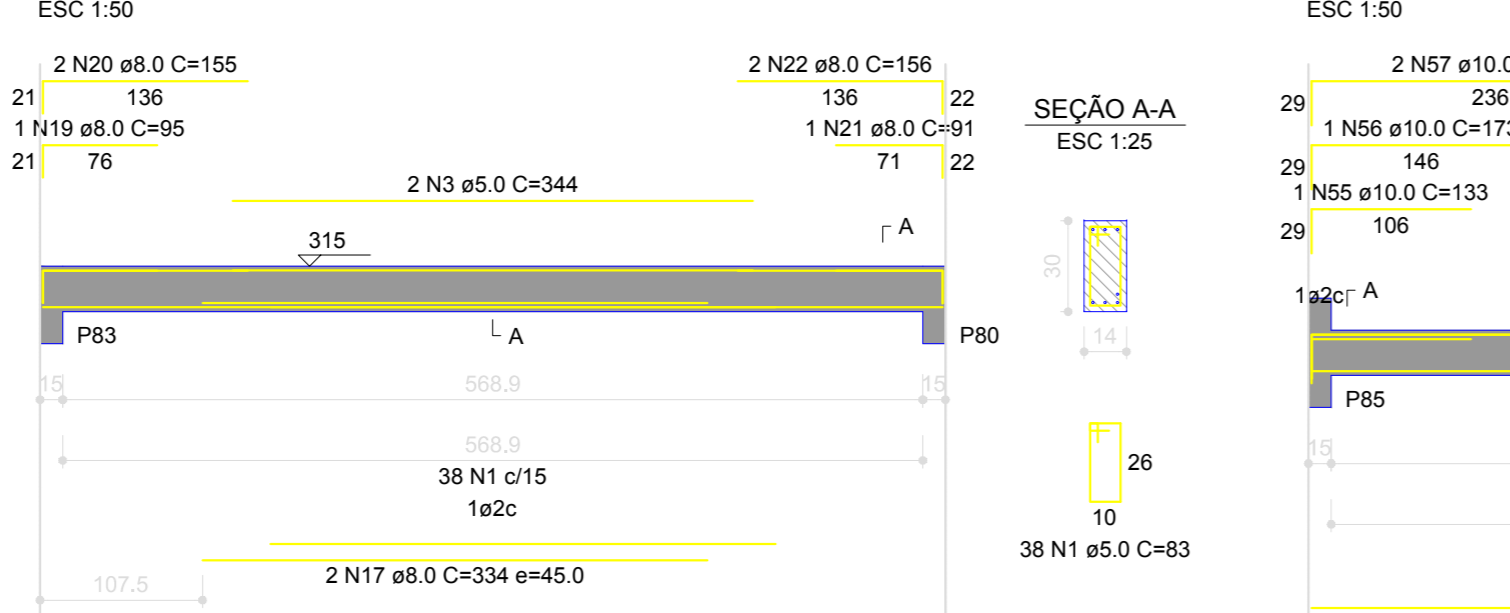


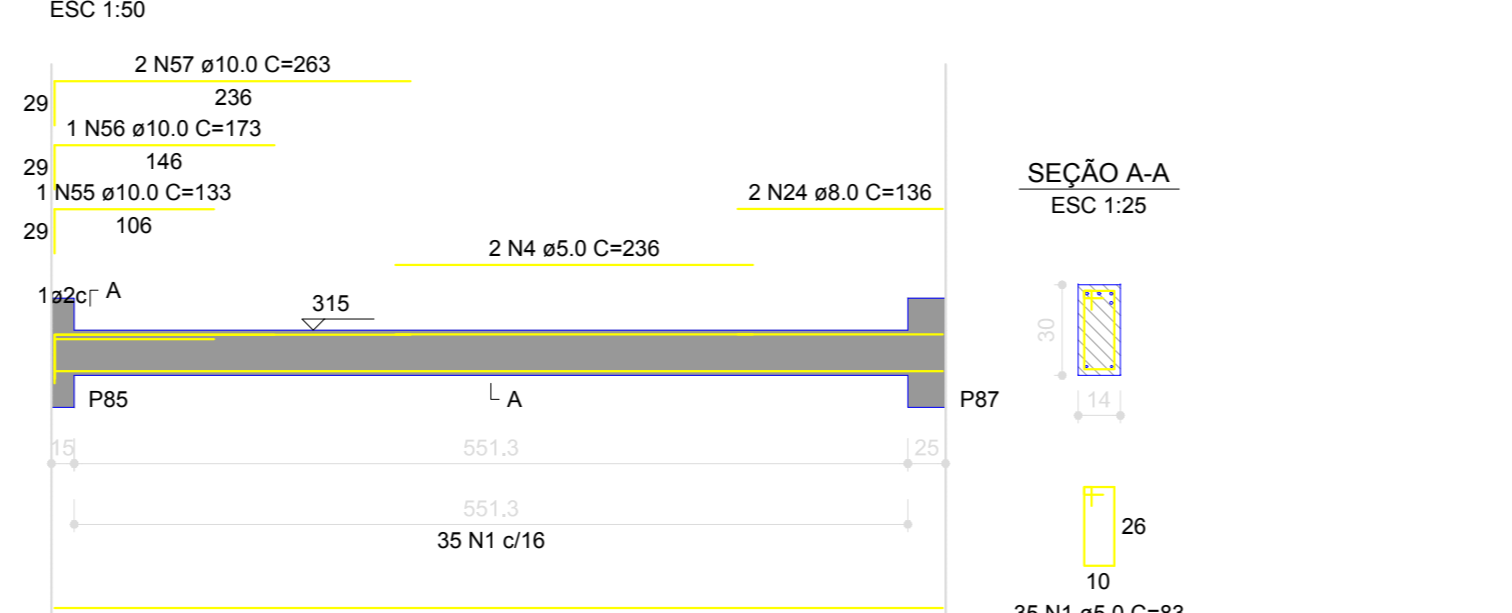
V80



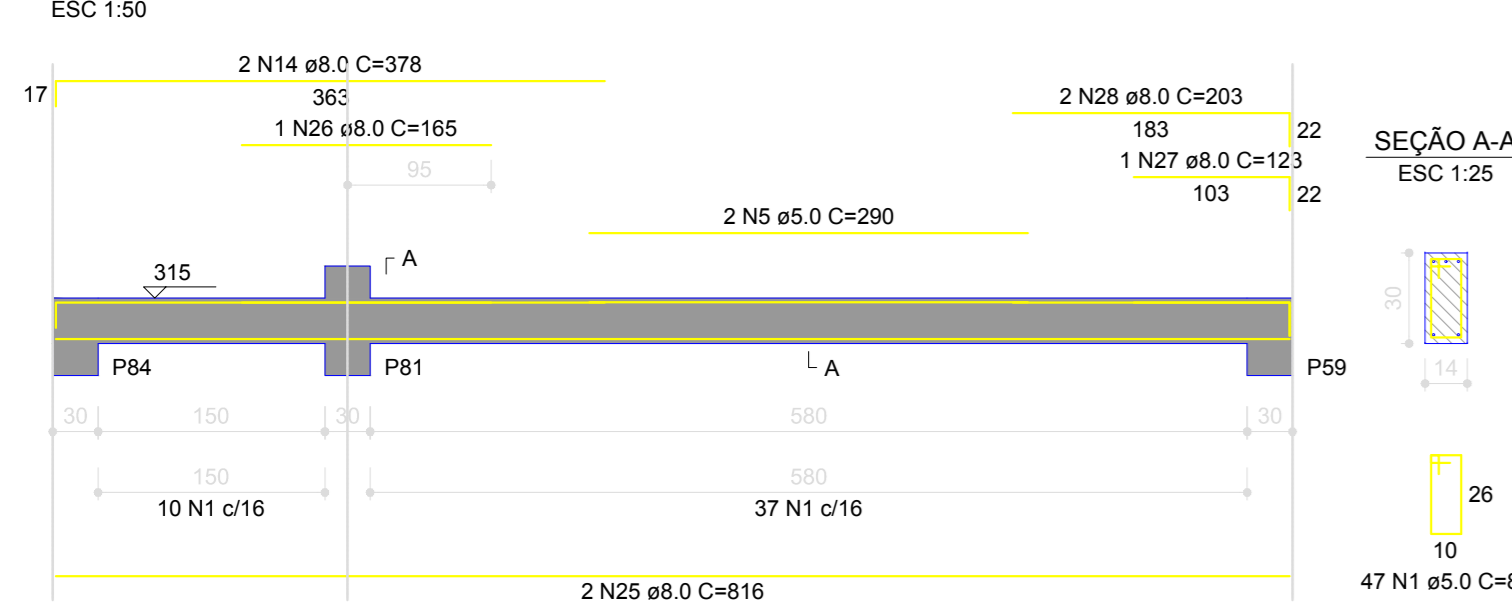
V81



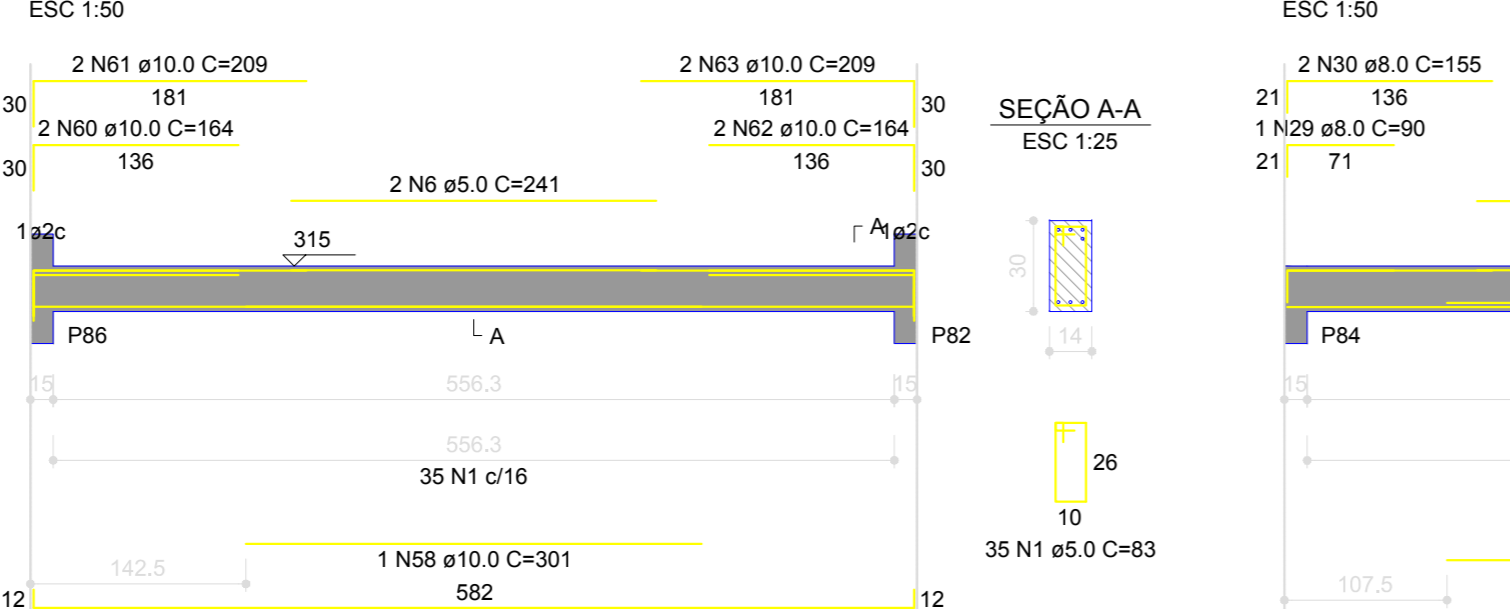
V82



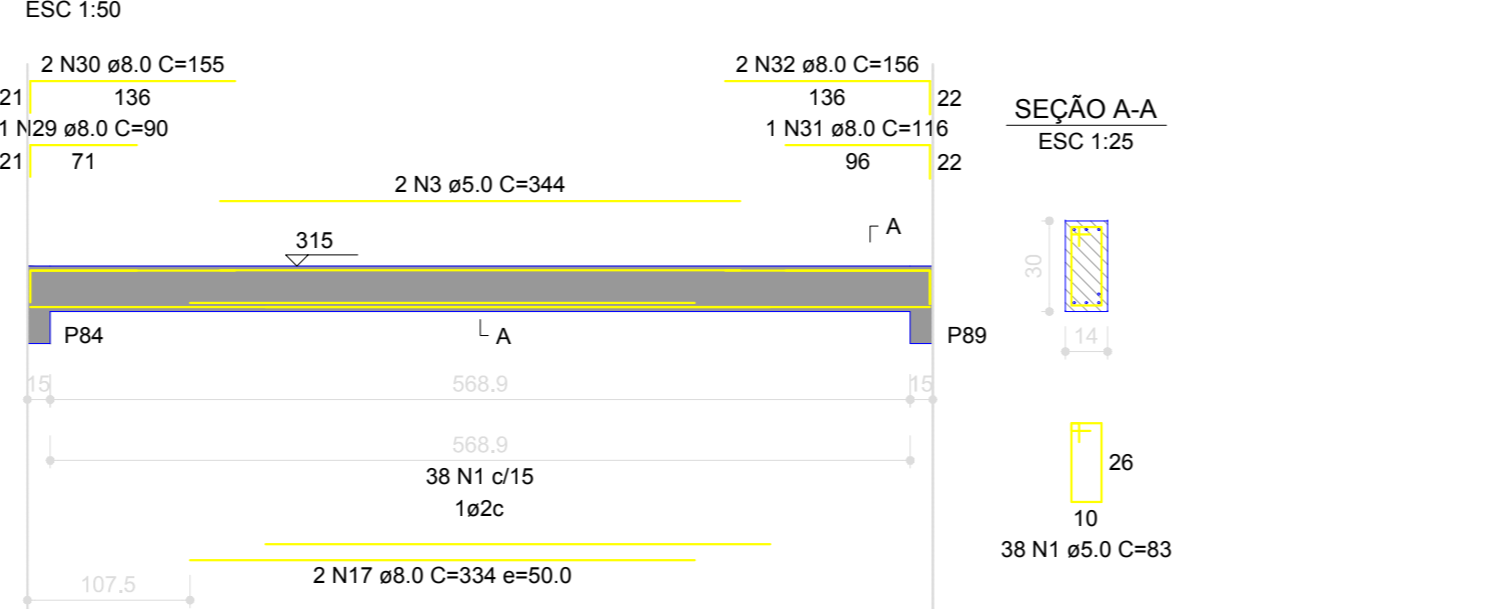
V83



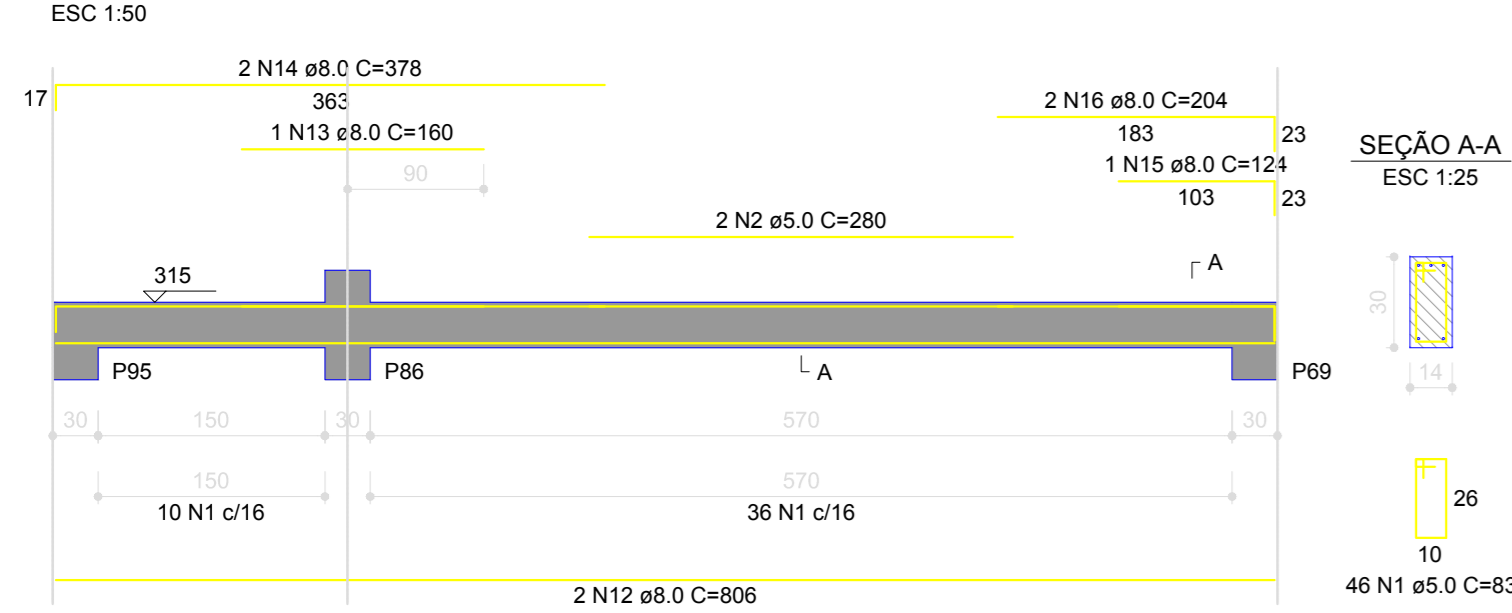
V84



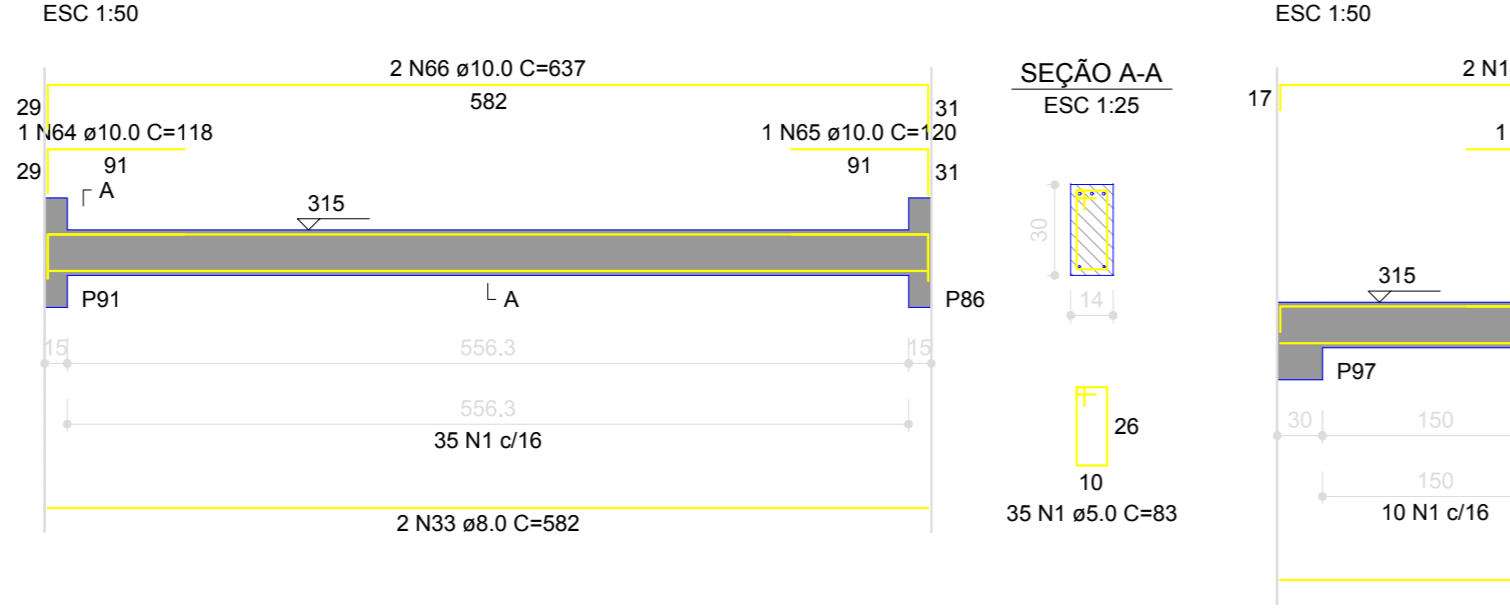
V85



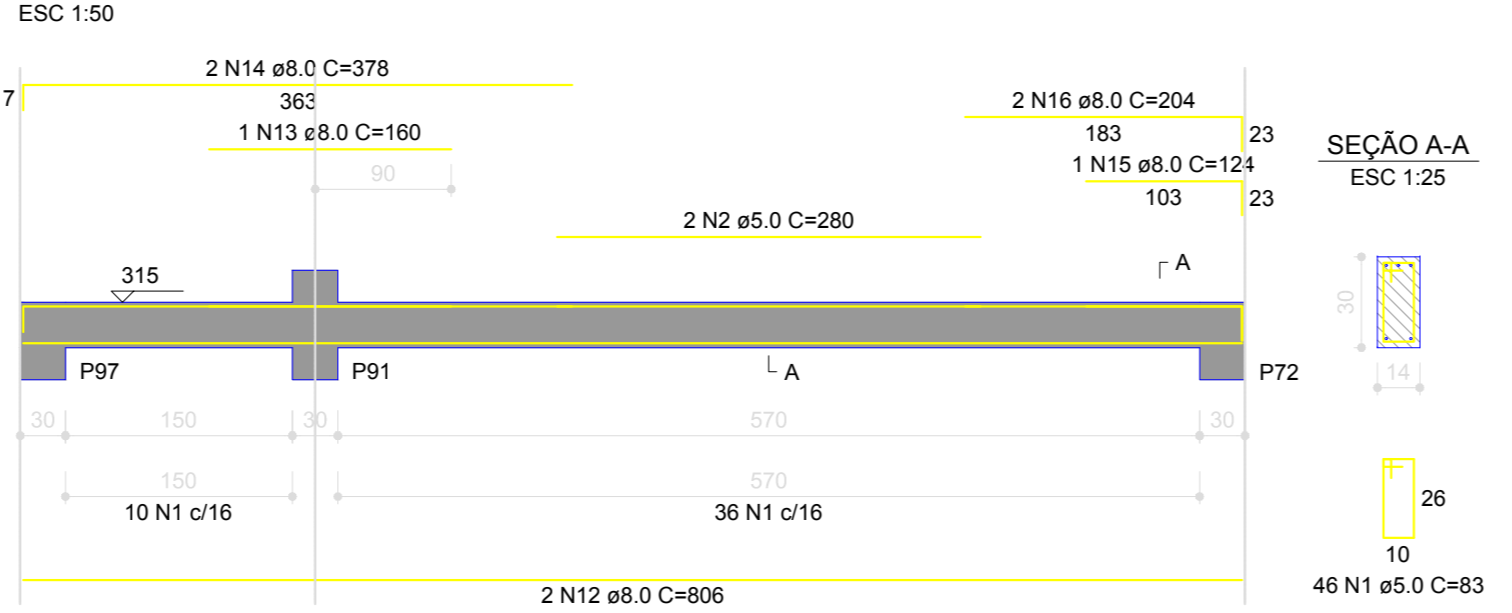
V86



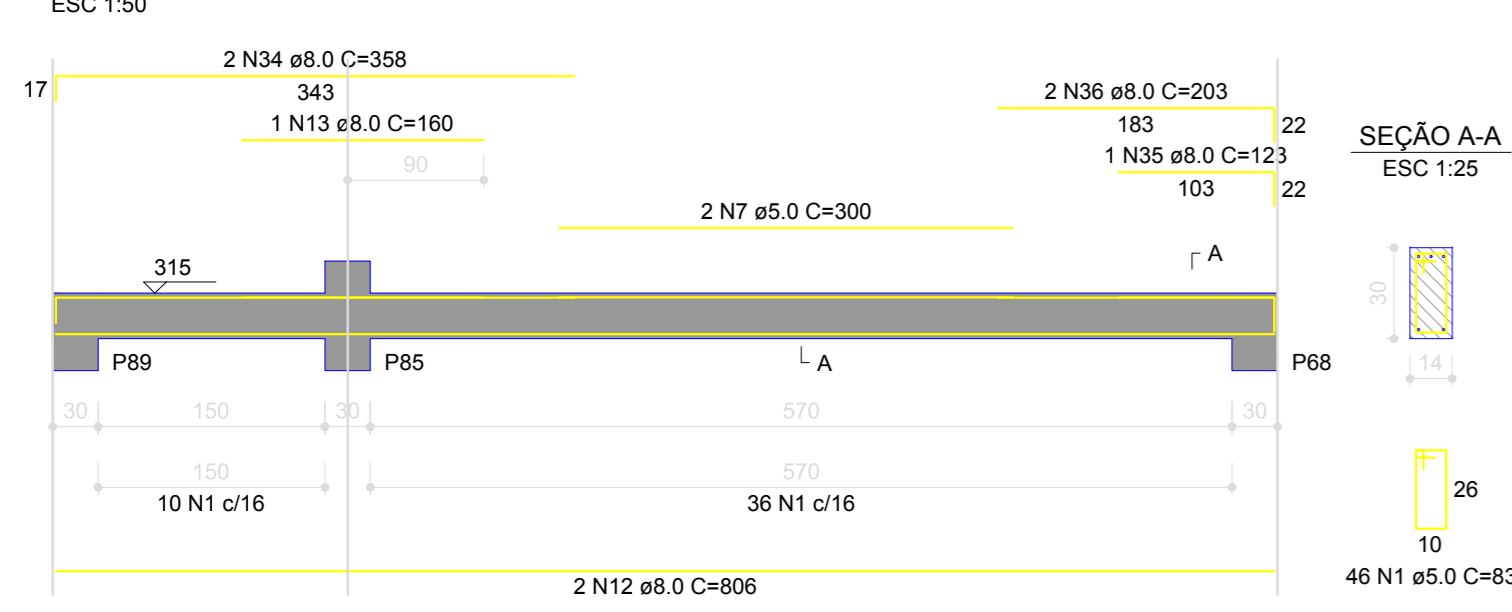
V87



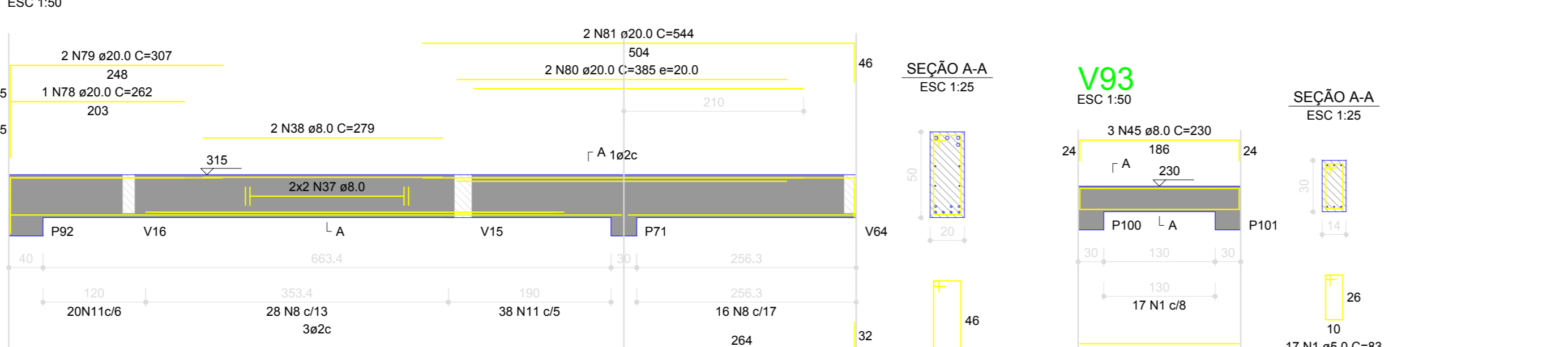
V88



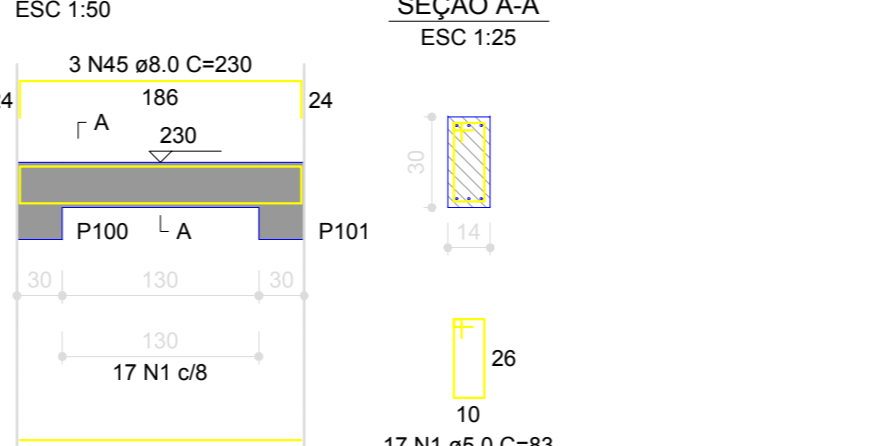
V89



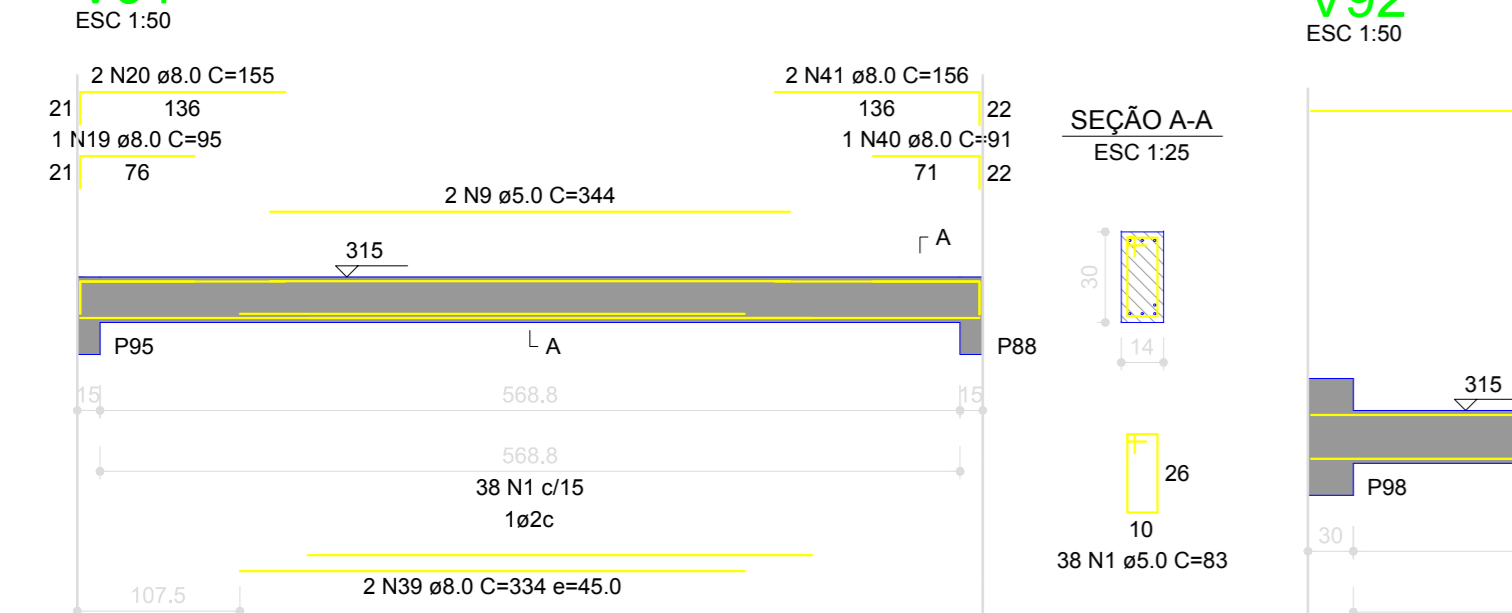
V90



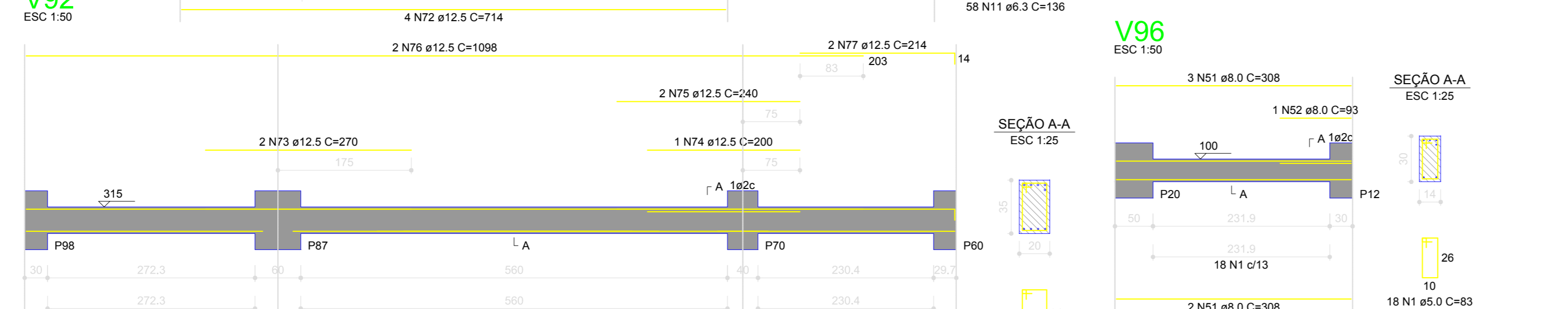
V93



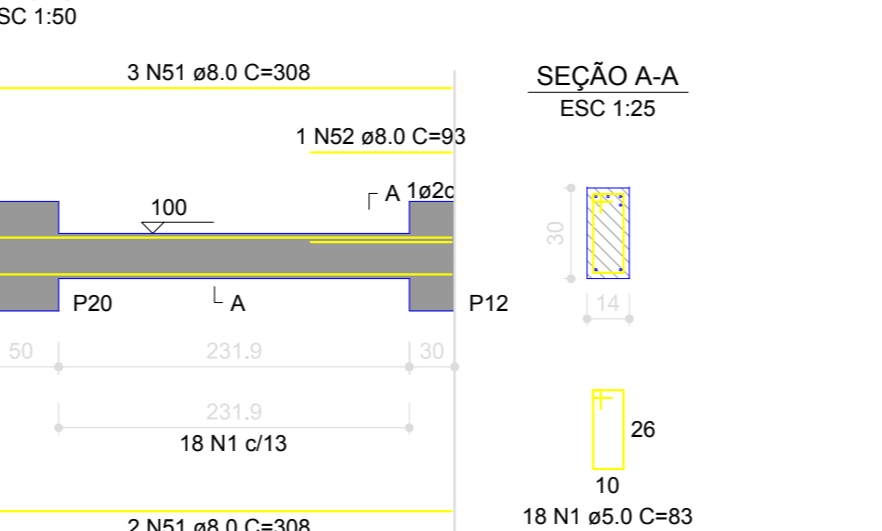
V91



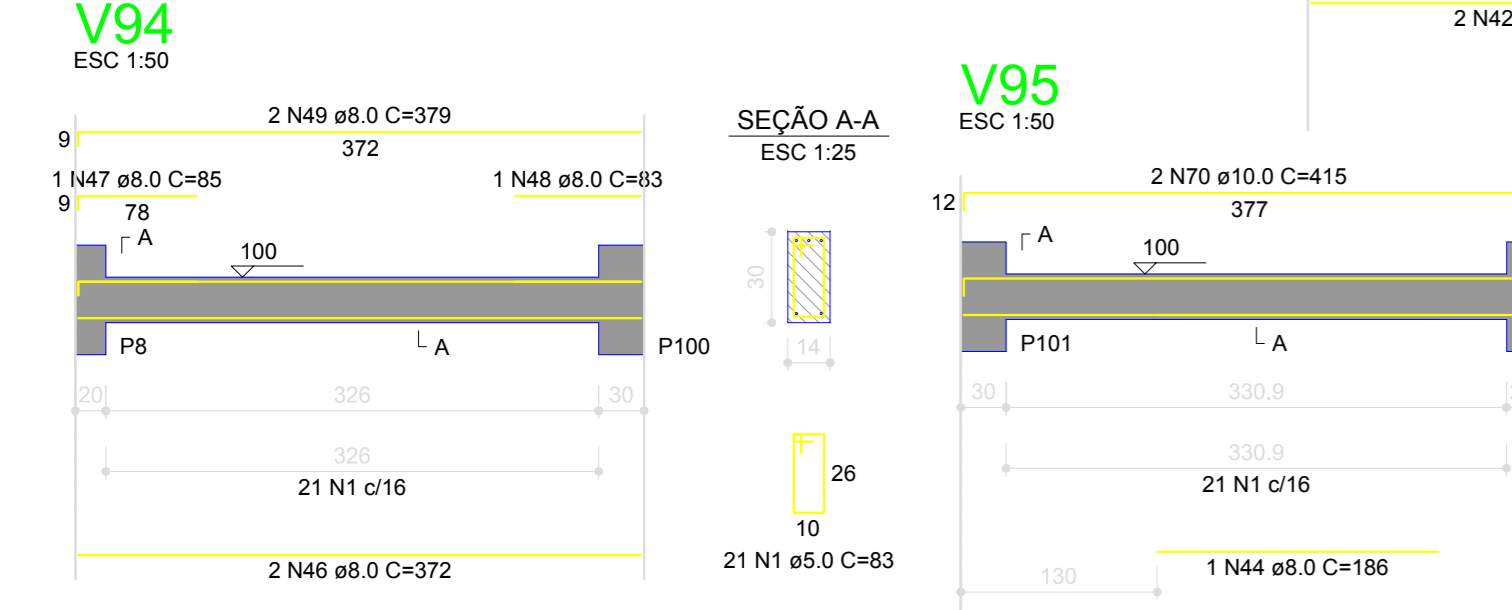
V92



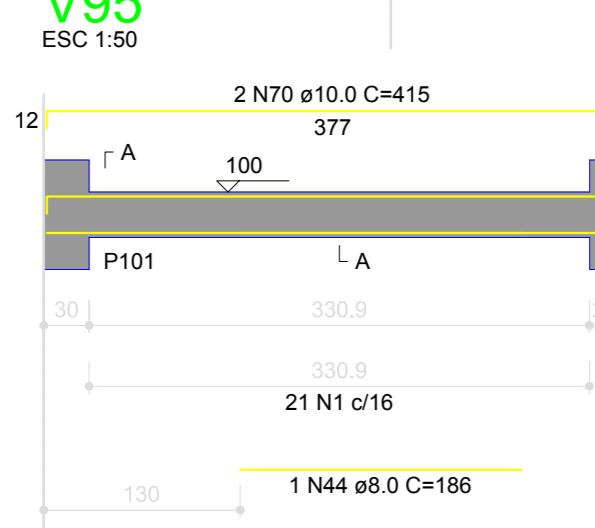
V96



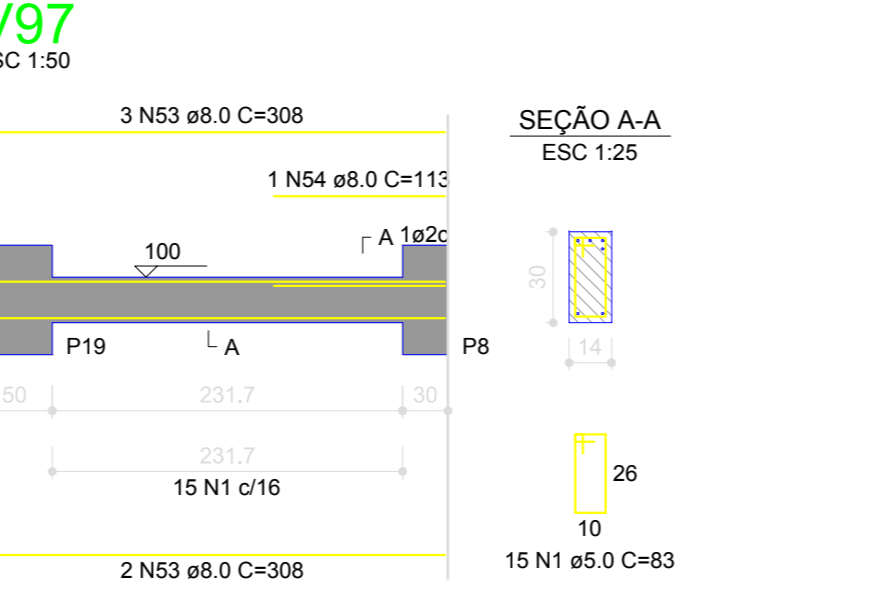
V94



V95



V97



RELAÇÃO DO AÇO

ACAO	N	DIAM (mm)	C.TOTAL (mm)	QUANT	CLAVT (mm)	C.TOTAL (mm)
CASO	2	8.0	0	280	1840	5080
	3	8.0	4	384	2512	6912
	4	8.0	2	230	1610	4540
	5	8.0	2	230	1610	4540
	6	8.0	2	241	1702	4742
	7	8.0	2	241	1702	4742
	8	8.0	44	135	940	2580
	9	8.0	84	102	670	1840
	10	8.0	84	102	670	1840
	11	8.0	86	102	738	1974
	12	8.0	8	808	5640	15480
	13	8.0	10	370	2590	7160
	14	8.0	8	370	2590	7160
	15	8.0	10	370	2590	7160
	16	8.0	6	204	1454	3984
	17	8.0	6	204	1454	3984
	18	8.0	6	204	1454	3984
	19	8.0	2	92	650	1780
	20	8.0	4	162	1152	3144
	21	8.0	2	91	646	1772
	22	8.0	2	106	762	2094
	23	8.0	2	136	972	2676
	24	8.0	2	136	972	2676
	25	8.0	1	162	1152	3144
	26	8.0	2	333	2334	6360
	27	8.0	2	333	2334	6360
	28	8.0	2	303	2124	5760
	29	8.0	2	303	2124	5760
	30	8.0	2	162	1152	3144
	31	8.0	2	162	1152	3144
	32	8.0	2	162	1152	3144
	33	8.0	2	162	1152	3144
	34	8.0	2	162	1152	3144
	35	8.0	2	162	1152	3144
	36	8.0	2	162	1152	3144
	37	8.0	2	162	1152	3144
	38	8.0	2	162	1152	3144
	39	8.0	2	162	1152	3144
	40	8.0	1	81	567	1539
	41	8.0	2	162	1152	3144
	42	8.0	2	162	1152	3144
	43	8.0	2	162	1152	3144
	44	8.0	4	186	1302	3588
	45	8.0	3	204	1454	3984
	46	8.0	2	162	1152	3144
	47	8.0	2	162	1152	3144
	48	8.0	1	81	567	1539
	49	8.0	2	162	1152	3144
	50	8.0	2	162	1152	3144
	51	8.0	2	162	1152	3144
	52	8.0	1	81	567	1539
	53	8.0	6	308	2196	5964
	54	8.0	1	113	801	2196
	55	10.0	1	113	801	2196
	56	10.0	1	113	801	2196
	57	10.0	2	201	1407	3744
	58	10.0	1	201	1407	3744
	59	10.0	2	201	1407	3744
	60	10.0	2	164	1152	2988
	61	10.0	2	164	1152	2988
	62	10.0	2	164	1152	2988
	63	10.0	1	132	948	2484
	64	10.0	1	132	948	2484
	65	10.0	2	237	1683	4416
	66	10.0	2	237	1683	4416
	67	10.0	2	237	1683	4416
	68	10.0	2	237	1683	4416
	69	10.0	2	237	1683	4416
	70	10.0	2	415	2955	7680
	71	12.5	3	476	3396	8850
	72	12.5	4	714	5040	13140
	73	12.5	2	270	1917	4995
	74	12.5	1	230	1635	4185
	75	12.5	2	415	2955	7680
	76	12.5	2	415	2955	7680
	77	20.0	1	582	4158	10740
	78	20.0	2	107	762	1956
	79	20.0	2	385	2735	7035
	80	20.0	2	385	2735	7035
	81	20.0	2	384	2724	6984

RESUMO DO AÇO

ACAO	DIAM (mm)	C.TOTAL (mm)	PERO + 10%
CASO	8.3	76.9	21.2
	10.0	87.7	23.8
	12.5	81.3	22.6
	20.0	27.3	7.4
	12.0	836.2	227.7

PERO TOTAL (kg)

CASO 488.3

CASO 107.7

Volume de concreto (0-30) = 5.71 m³

Area de forma = 80.82 m²

REVISÕES			
Rev.	Data:	Descrição	
Elaboração: Prefeitura Municipal de Iracema-Ceará			
Obra: CONSTRUÇÃO DO MERCADO PÚBLICO DE IRACEMA - CE		Projeto: ESTRUTURAL	
Local: Avenida Projatada, S/N, Bairro Centro, Iracema-CE		Categoria: -	
Resp. Projeto: Ricardo C. Moura CREA 11.590-D	Identificação dos Desenhos: PAVIMENTO SUPERIOR: WGAS		Prancha: 10/14
Desenho: -	Escala: INDICADA	Data: AGOSTO/2018	