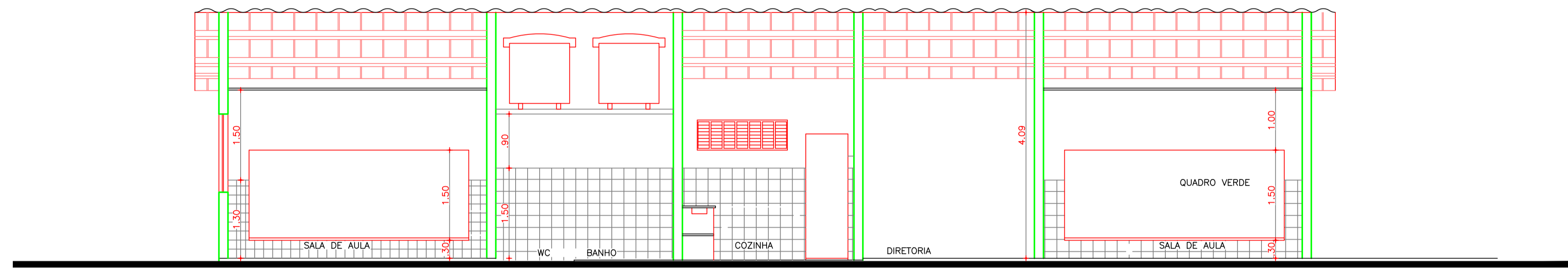
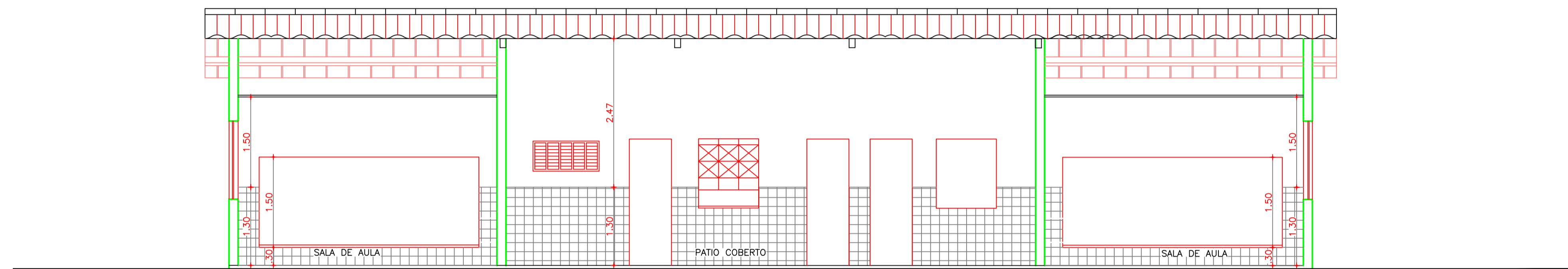


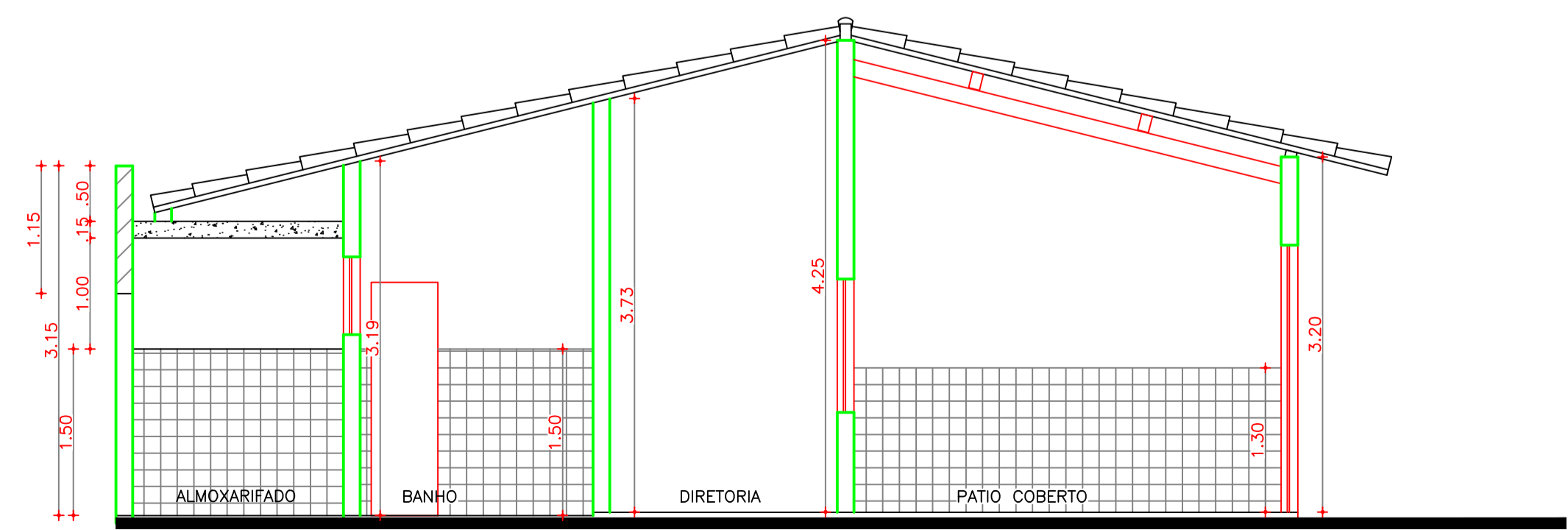
1. FACHADA PRINCIPAL



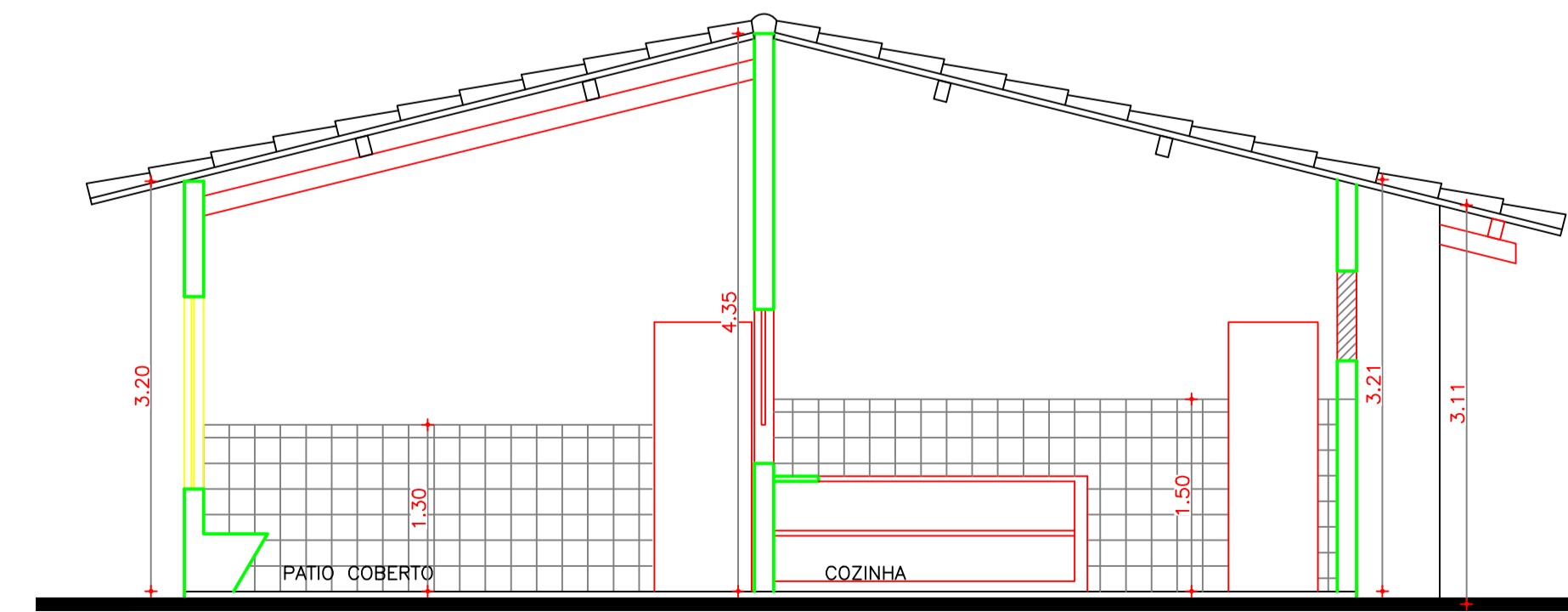
2. CORTE AA



3. CORTE BB

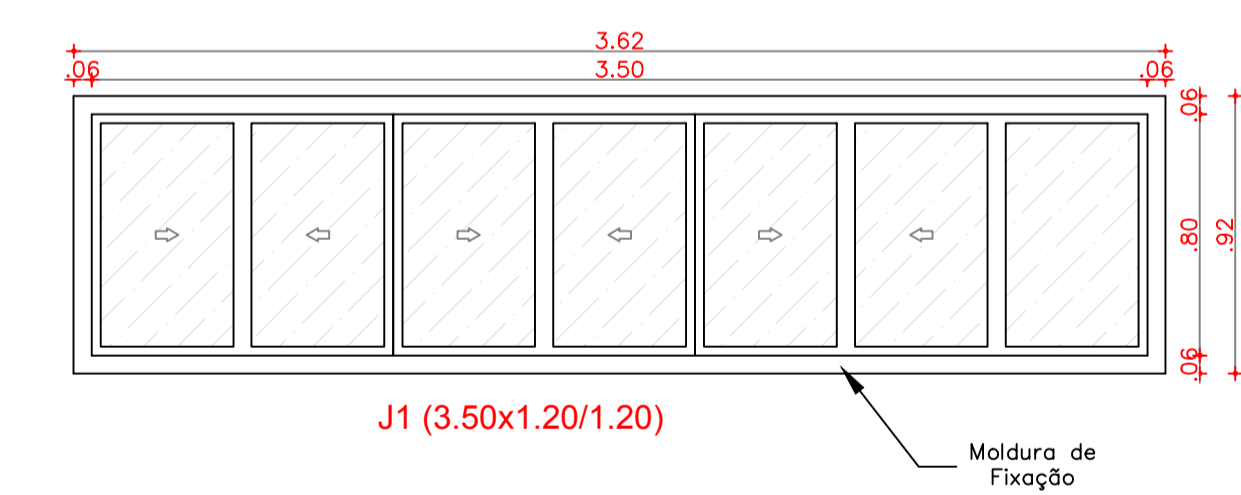
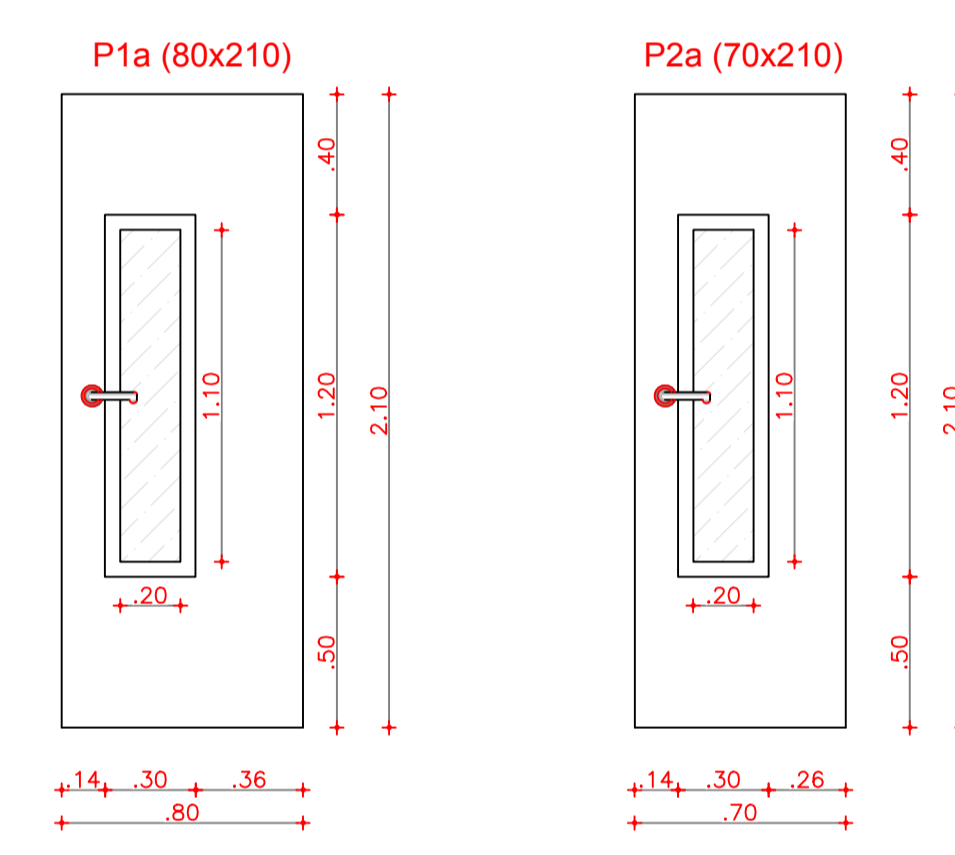
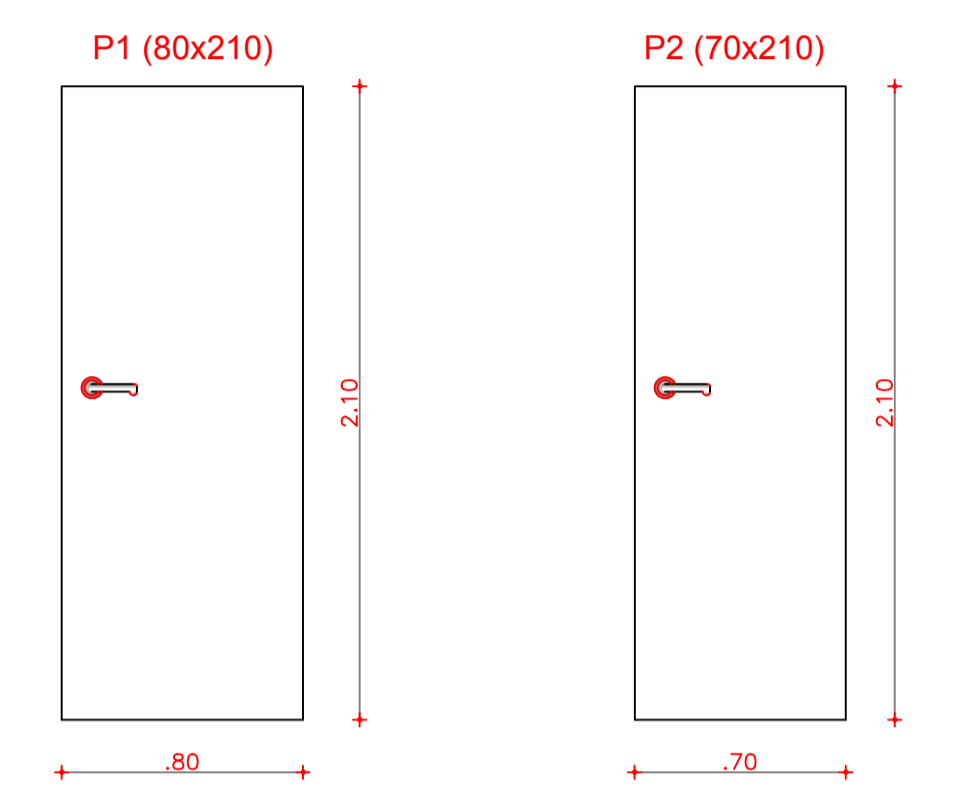


4. CORTE CC



5. CORTE DD

6. Esquadrias
Esc.: 1/25



Elaboração: Prefeitura Municipal de Iracema-Ceará			
Obra: Reforma da E.M.E.I Valdeir Magalhães Moura		Projeto: Arquitetônico	
Local: Rua Joaquim de Holanda Campelo, 592, Jatobá, Iracema-Ce		Categoria: ARQ	
Projeto: Ricardo C. Moura CREA 11.590-D	Identificação dos Desenhos: 01. Fachada Principal 02. Corte AA 03. Corte BB 04. Corte CC 05. Corte DD 06. Esquadrias	Prancha: 01/02	
Desenho: Cícero Fernandes	Escala: 1/150	Data: 22/04/2021	