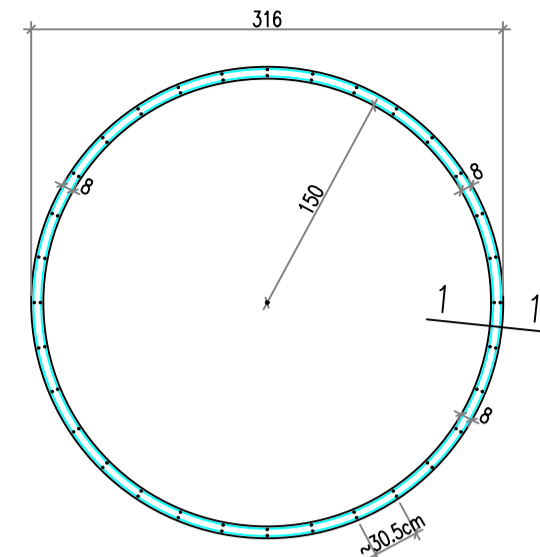
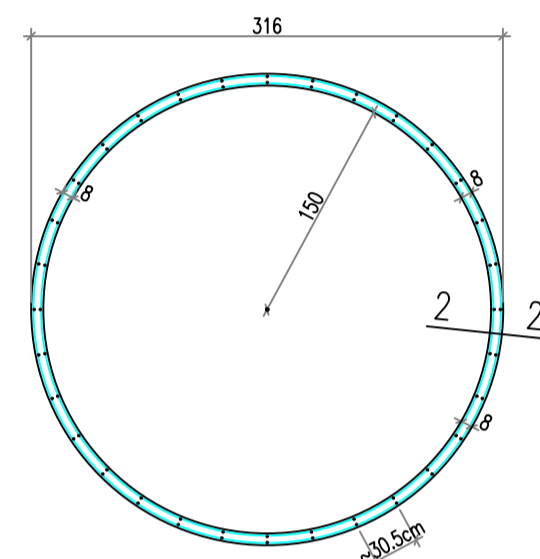
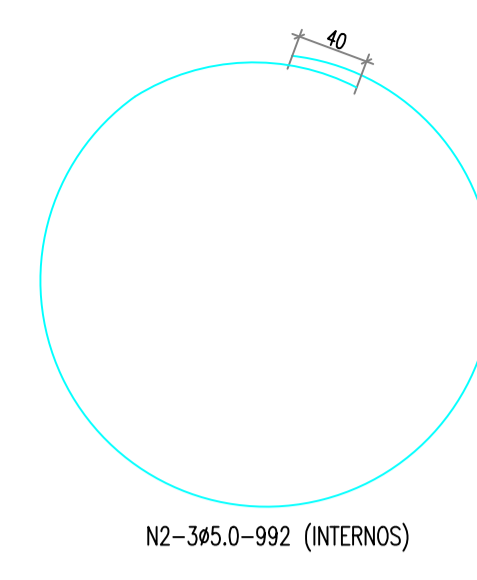
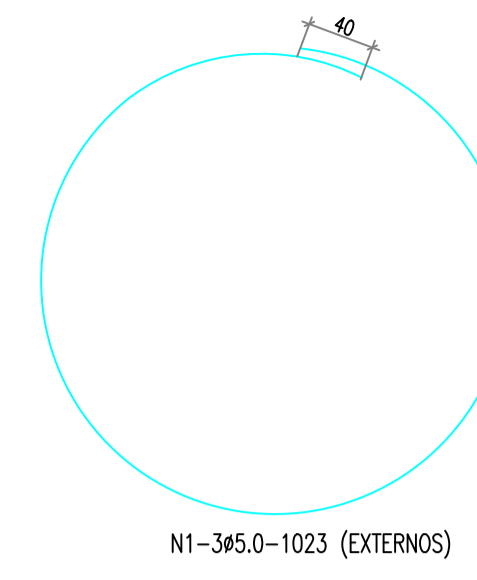
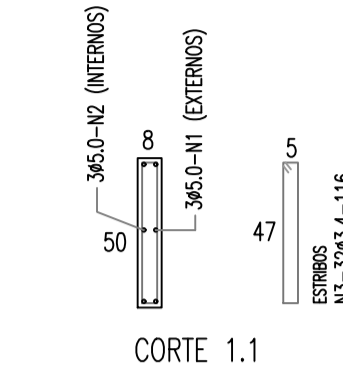


ARMADURA			
N	O	QUANT	COMP
1	5	33	11253
2	5	33	10912
3	3,4	352	1276
4	8	24	6288
5	5	18	5952
6	3,4	192	696
7	5	12	3684
8	5	12	3556
9	3,4	124	464
10	5	2	1023
11	5	2	992
12	3,4	29	116
13	12,5	1	1083
14	12,5	1	1052
15	5	7	116
16	5		116
17	12,5		864
18	12,5		832
19	5		VAR
20	5		VAR
21	8		130
22	8		130
23	8		180
24	5		VAR
25	5		VAR
26	5		40
27	5		43

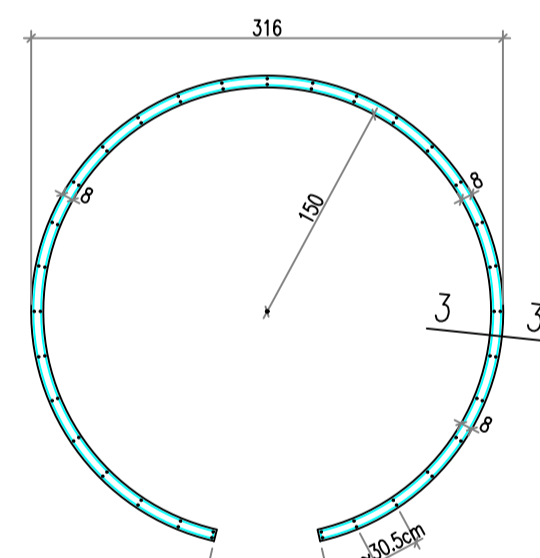
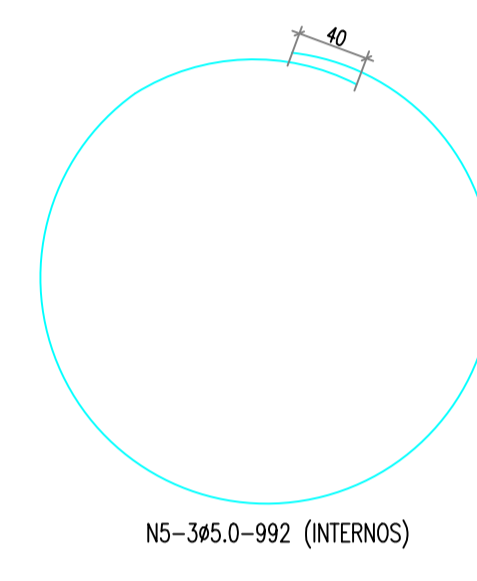
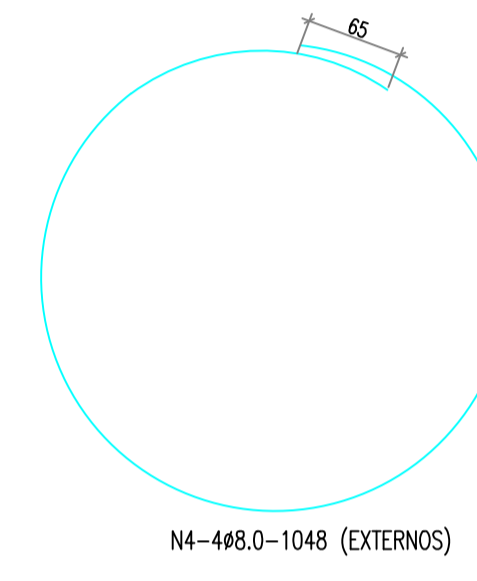
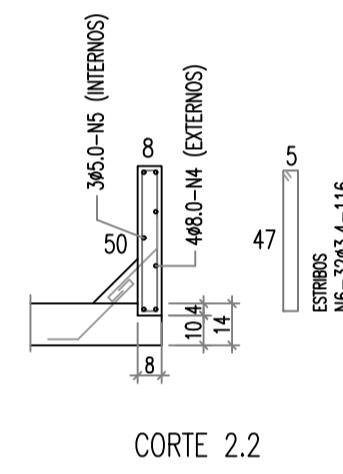
RESUMO DE AÇO		
BITOTA(MM)	COMP(MM)	PESO KG
3,4	2552	36,45714
5	37687	251,2467
8	6728	17,03291
12,5	3831	3,978193
TOTAL		308,7149



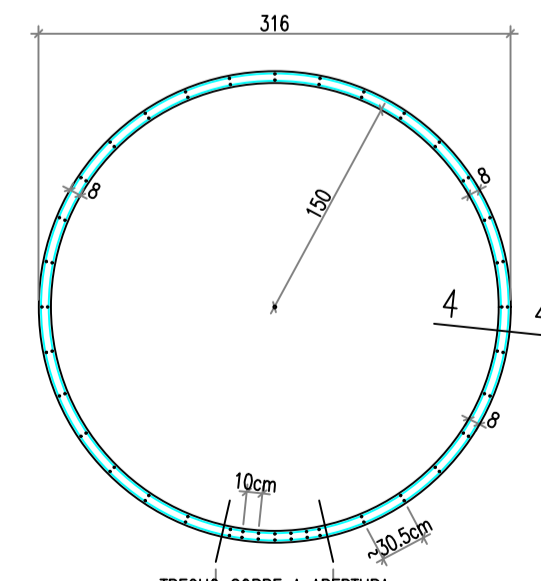
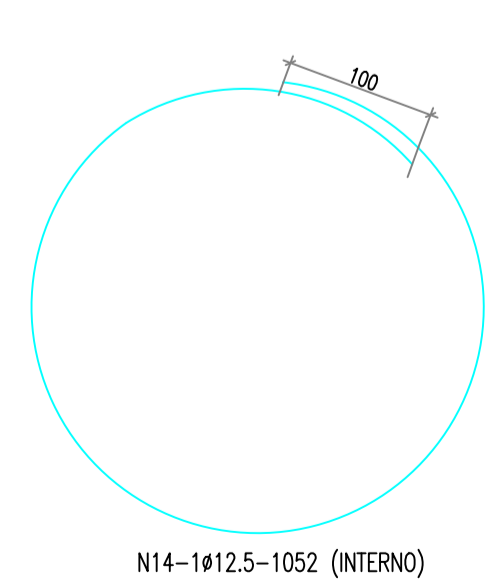
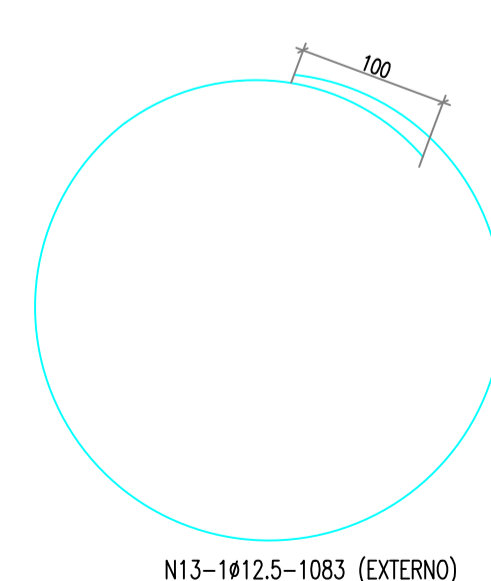
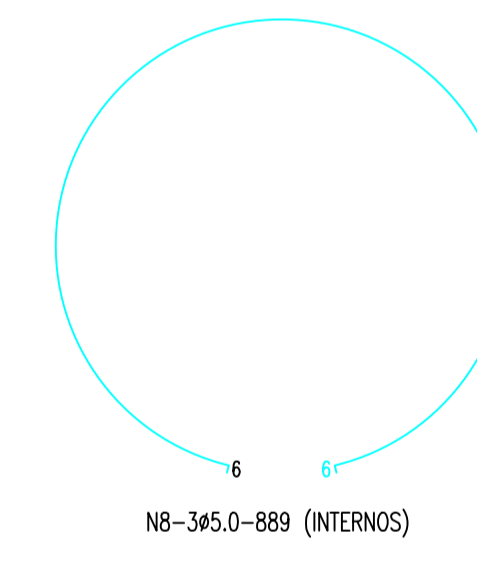
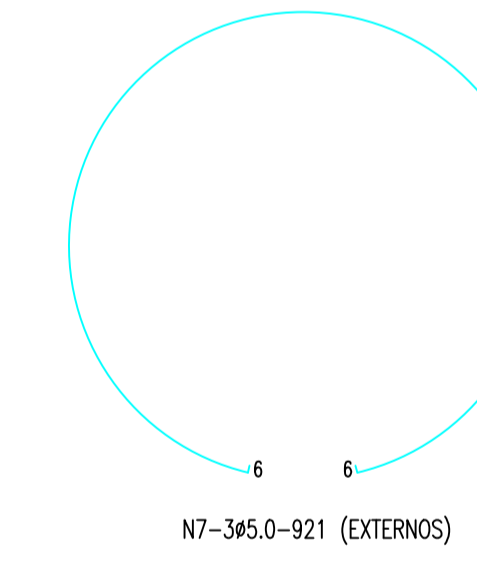
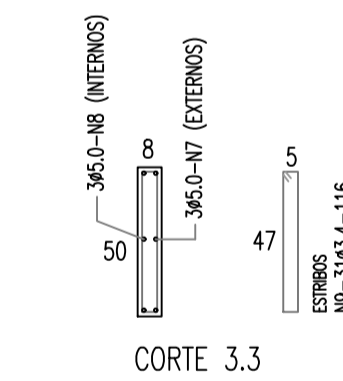
DET. ANEL TIPO A
(x11)



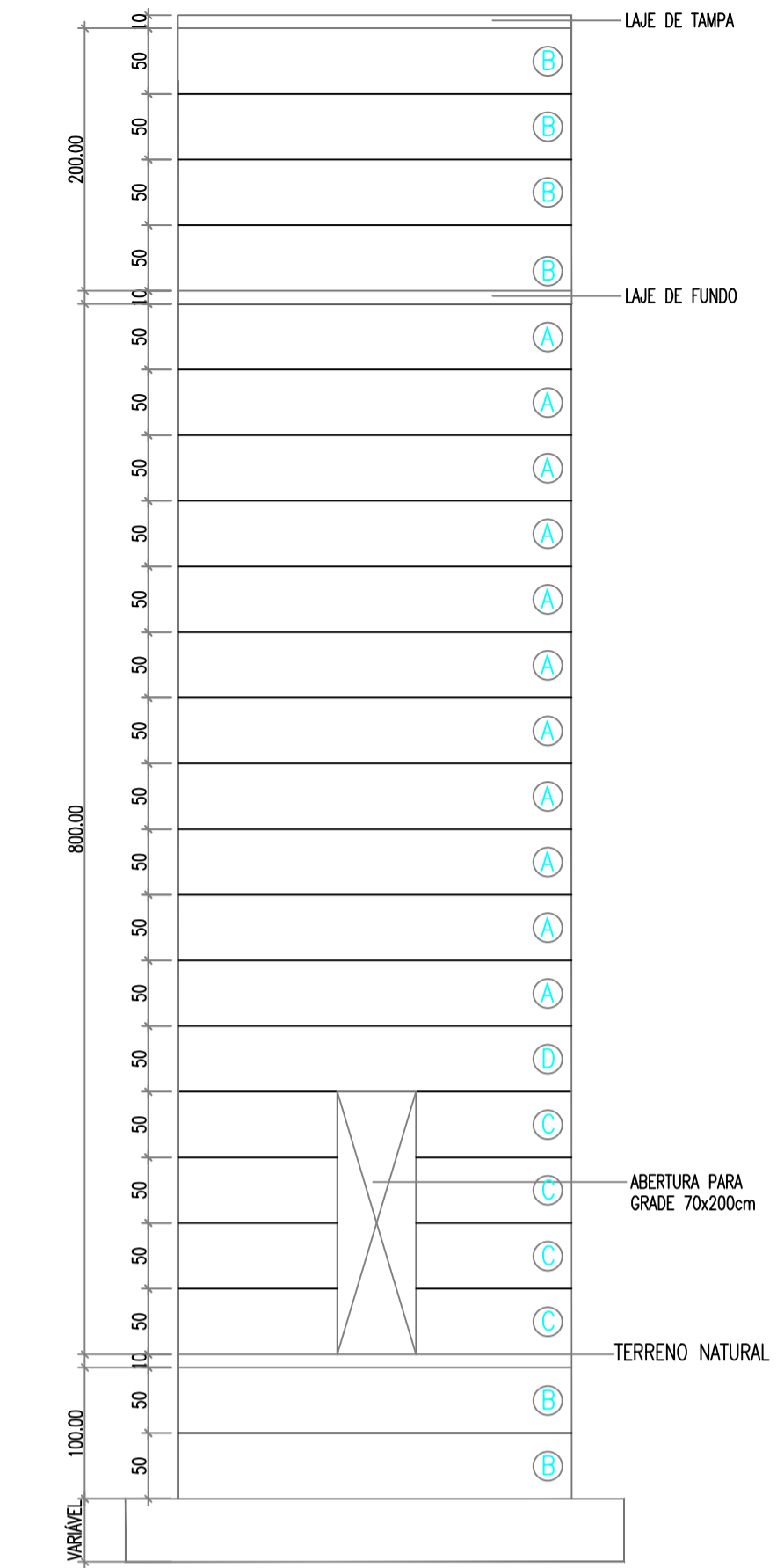
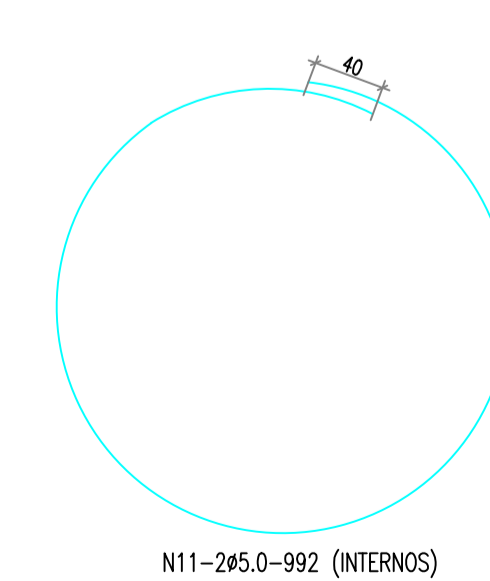
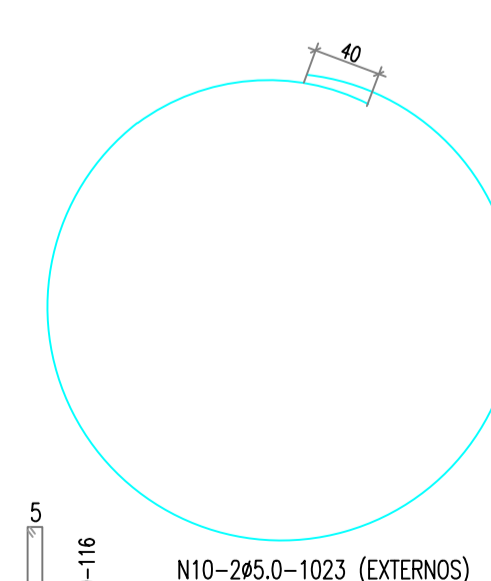
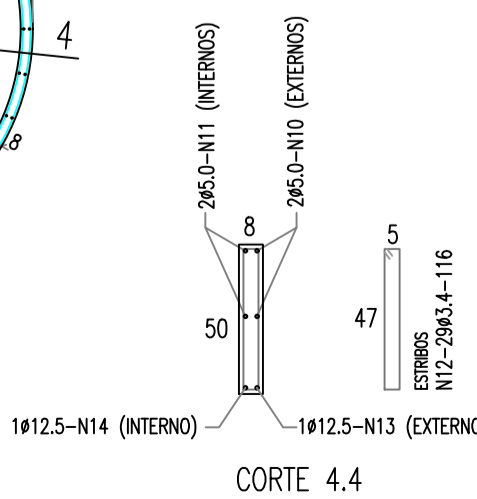
DET. ANEL TIPO B
(x6)



DET. ANEL TIPO C
(x4)



DET. ANEL TIPO D
(x1)



ESQUEMA VERTICAL DA CAIXA D'ÁGUA

APROVAÇÃO:

PROPRIETÁRIO: _____ FISCALIZAÇÃO: _____

PROJETISTA: *Cláudio José Quieroz Barros*

	PREFEITURA MUNICIPAL DE IRACEMA	
	DESENHO: 01/01	PRIMEIRA: 01/02
CONSTRUÇÃO DE GINÁSIO NA SEDE DO MUNICÍPIO DE IRACEMA-CE		
RESERVATÓRIO ELEVADO 12,00m³ E CISTERNA DE 4,5m³ PROJETO ESTRUTURAL DOS ANÉIS E LAJES.		

LOCAL: RUA GERVASIO HOLANDA GUERRA - IRACEMA - CEARÁ	ESCALA:
PROJETISTA: CLÁUDIO JOSÉ QUIEROZ BARROS - CREA CE: 13.419 D	INDICADA:
PROPRIETÁRIO: PREFEITURA MUNICIPAL DE IRACEMA	DATA:
DESENHISTA: GILDERLAN SOARES	ARQUIVO: GIN_IRACEMA_EST_REL_ANEIS_LAJES_01_02_R0.DWG
OUTUBRO / 2018	