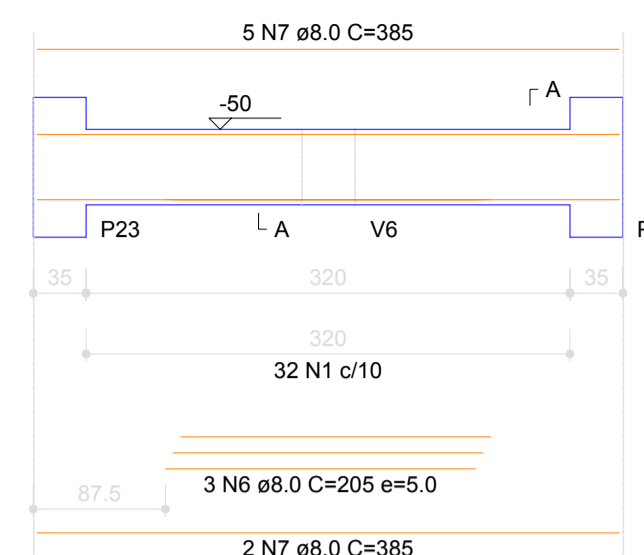
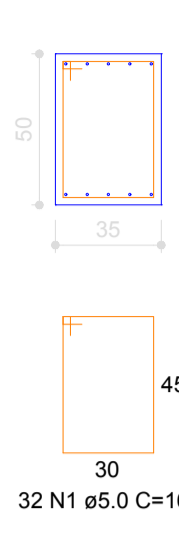


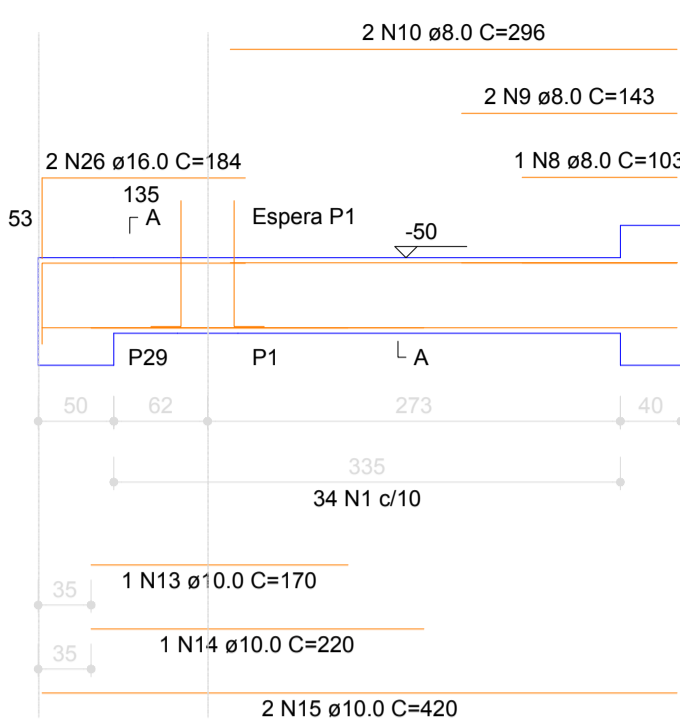
V1
ESC 1:50



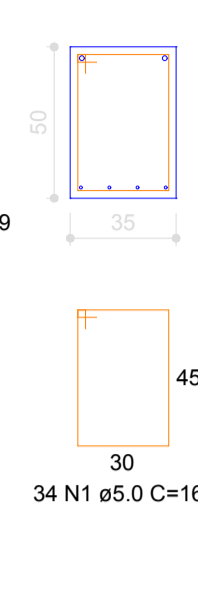
SEÇÃO A-A
ESC 1:25



V2
ESC 1:50



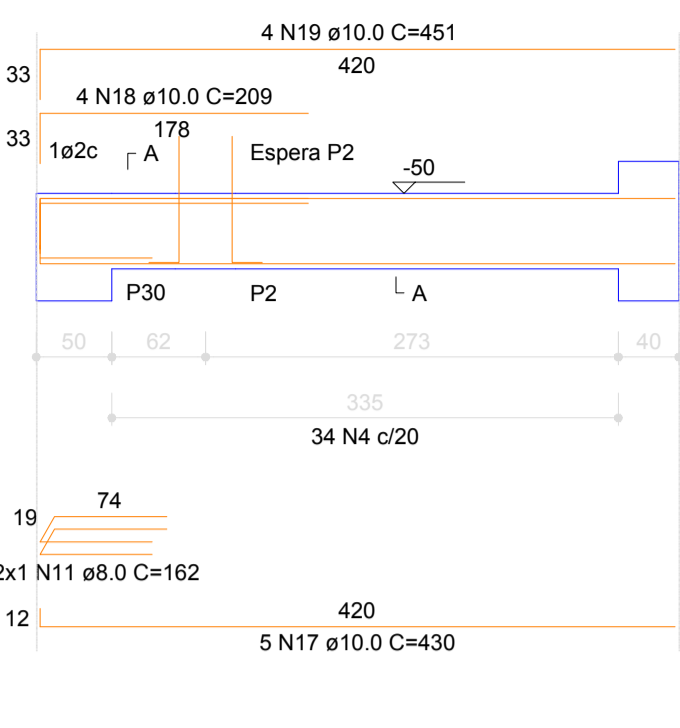
SEÇÃO A-A
ESC 1:25



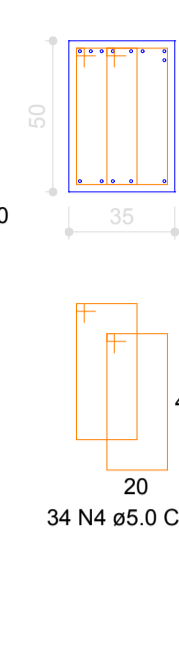
ESPERA P1
ESC 1:25



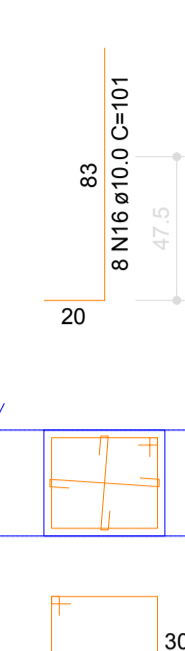
V3
ESC 1:50



SEÇÃO A-A
ESC 1:25



ESPERA P2
ESC 1:25



RELAÇÃO DO AÇO

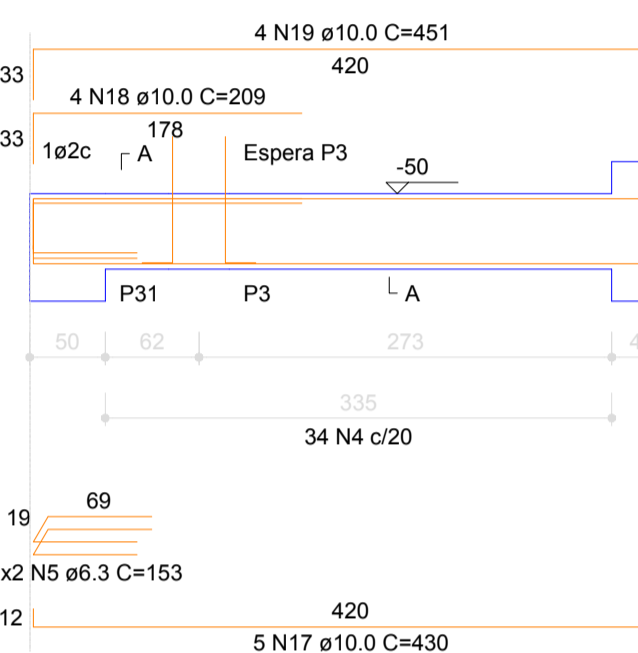
AÇO	N	DIAM (mm)	QUANT	C.UNIT (cm)	C.TOTAL (cm)
CA60	1	5.0	100	161	16100
	2	5.0	54	139	7506
	3	5.0	108	50	5400
	4	5.0	238	141	33558
	5	6.3	16	153	2448
	6	8.0	3	205	615
	7	8.0	7	385	2695
	8	8.0	2	103	206
	9	8.0	4	143	572
	10	8.0	4	296	1184
	11	8.0	8	162	1296
	12	8.0	14	428	5992
	13	10.0	2	170	340
	14	10.0	2	220	440
	15	10.0	4	420	1680
	16	10.0	80	101	8080
	17	10.0	20	430	8600
	18	10.0	16	209	3344
	19	10.0	16	451	7216
	20	10.0	4	428	1712
	21	10.0	2	189	378
	22	10.0	3	224	672
	23	10.0	4	474	1896
	24	12.5	2	207	414
	25	12.5	8	459	3672
	26	16.0	4	184	736

RESUMO DO AÇO

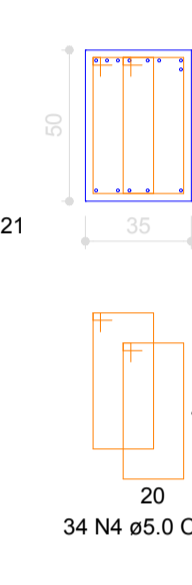
AÇO	DIAM (mm)	C.TOTAL (m)	PESO + 0% (kg)
CA50	6.3	24.5	6
	8.0	125.6	49.6
	10.0	343.6	211.8
	12.5	40.9	39.4
	16.0	7.4	11.6
CA60	5.0	625.8	96.5
PESO TOTAL (kg)			
CA50			318.4
CA60			96.5

Volume de concreto (C-30) = 7.37 m³
Área de forma = 56.87 m²

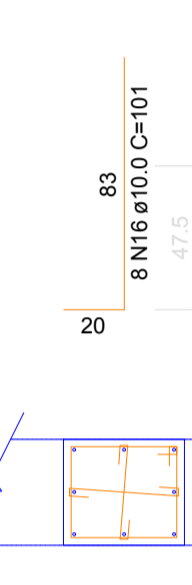
V4
ESC 1:50



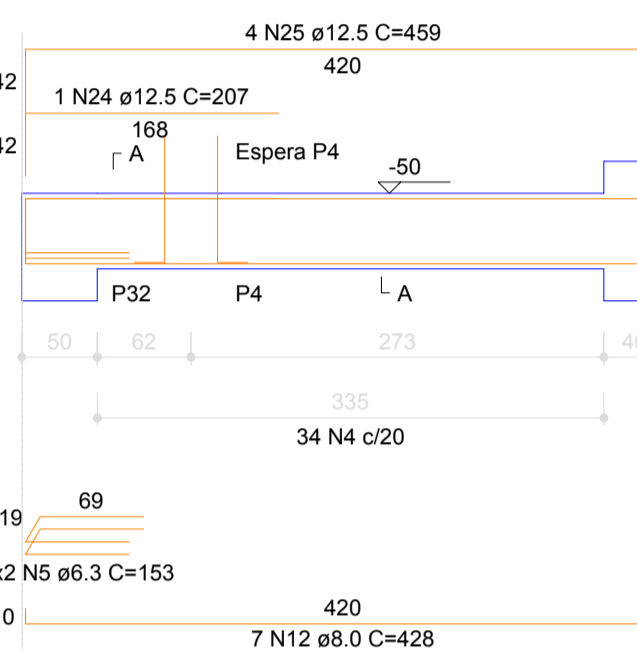
SEÇÃO A-A
ESC 1:25



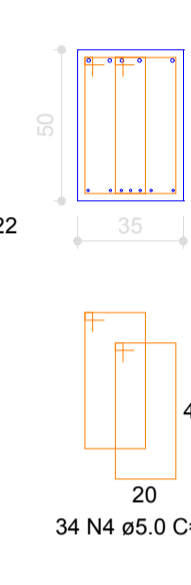
ESPERA P3
ESC 1:25



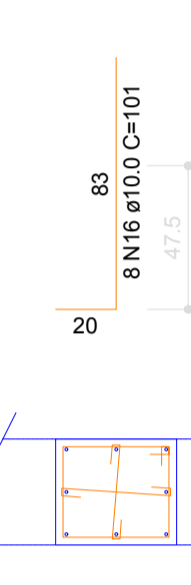
V5
ESC 1:50



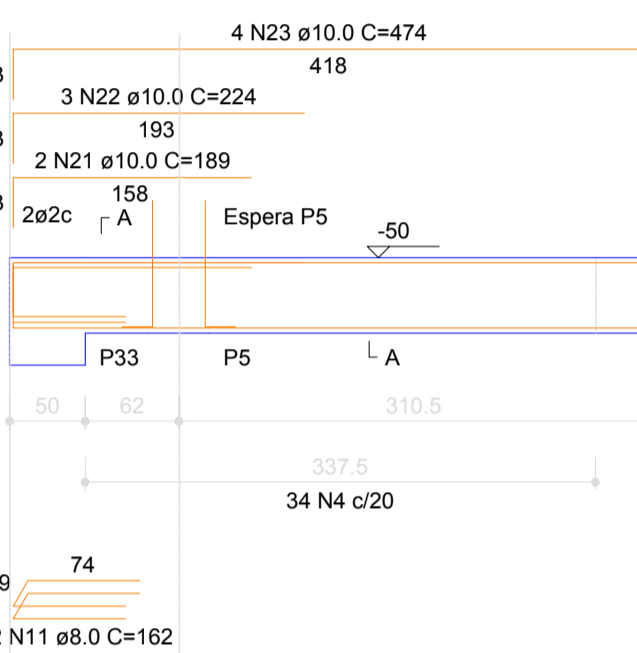
SEÇÃO A-A
ESC 1:25



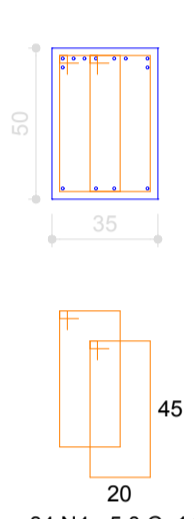
ESPERA P4
ESC 1:25



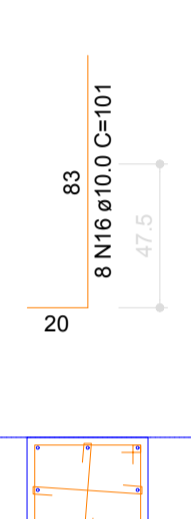
V6
ESC 1:50



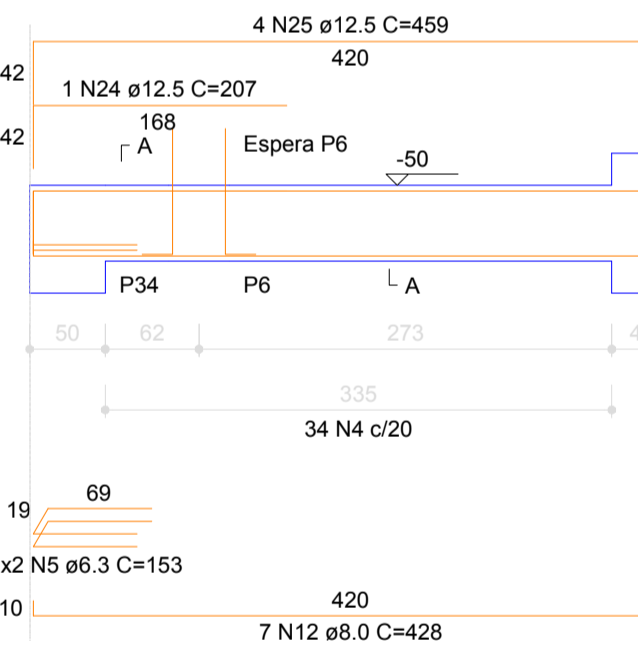
SEÇÃO A-A
ESC 1:25



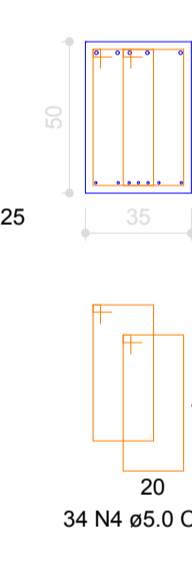
ESPERA P5
ESC 1:25



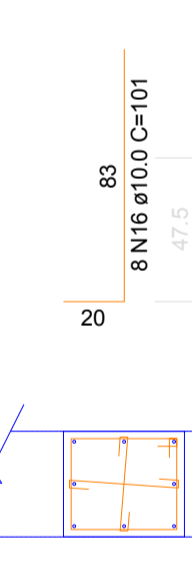
V7
ESC 1:50



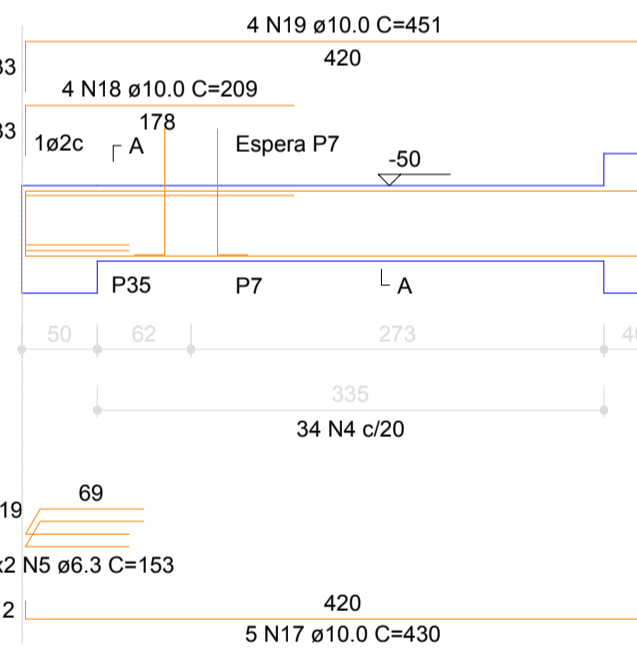
SEÇÃO A-A
ESC 1:25



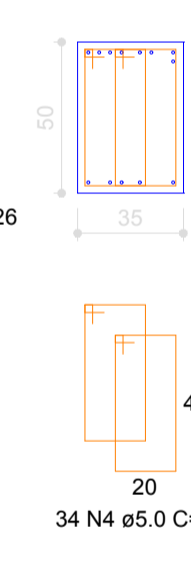
ESPERA P6
ESC 1:25



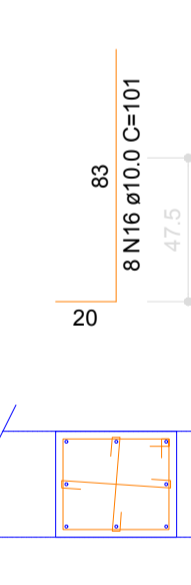
V8
ESC 1:50



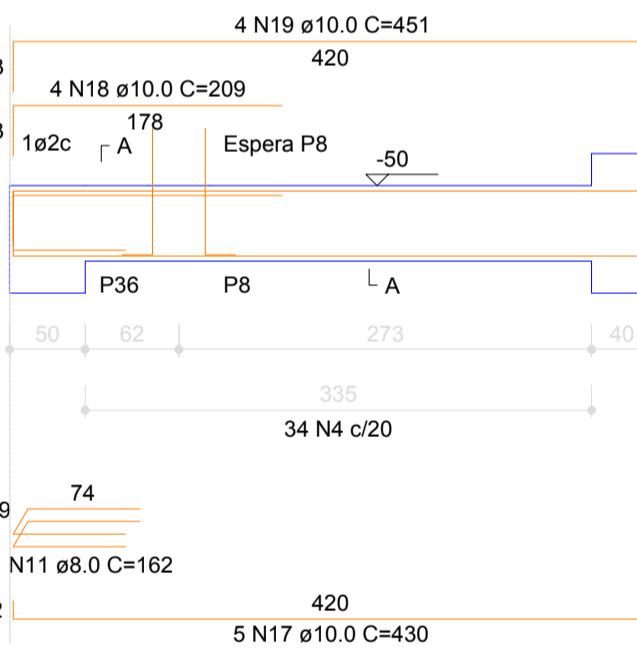
SEÇÃO A-A
ESC 1:25



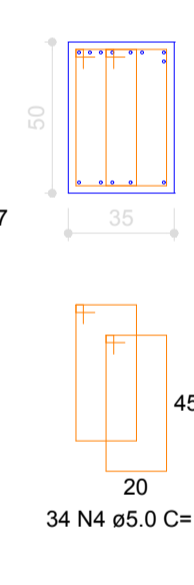
ESPERA P7
ESC 1:25



V9
ESC 1:50



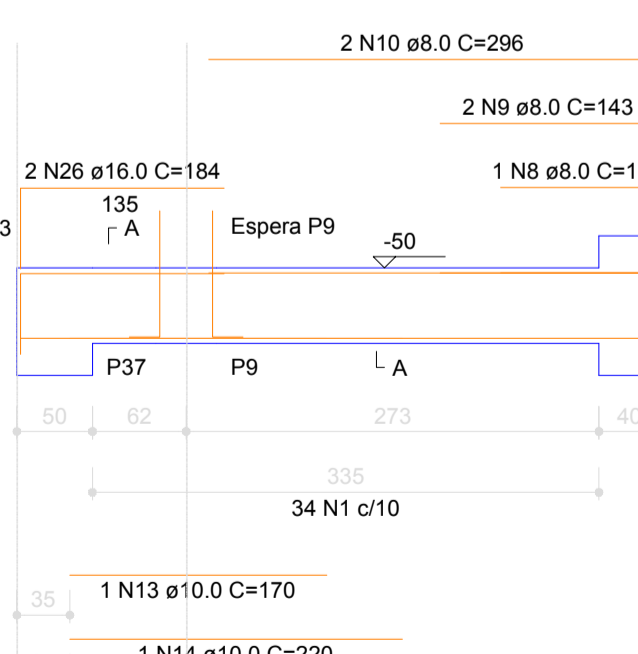
SEÇÃO A-A
ESC 1:25



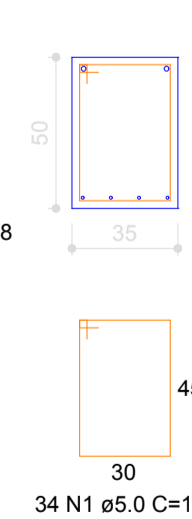
ESPERA P8
ESC 1:25



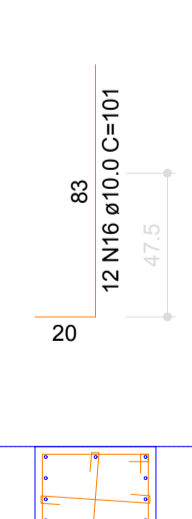
V10
ESC 1:50



SEÇÃO A-A
ESC 1:25



ESPERA P9
ESC 1:25



APROVAÇÃO:

PROPRIETÁRIO: _____ FISCALIZAÇÃO: _____

PROJETISTA: *Cláudio José Queiroz Barros*

DESENHO: 01/01 PRANCHA Nº: 04/07

PREFEITURA MUNICIPAL DE IRACEMA

CONSTRUÇÃO DE GINÁSIO NA SEDE DO MUNICÍPIO DE IRACEMA-CE

PROJETO ESTRUTURAL DE CONCRETO
VIGAS DO PAVIMENTO TÉRREO

LOCAL: RUA GERVASIO HOLANDA GUERRA - IRACEMA - CEARÁ

PROJETISTA: CLÁUDIO JOSÉ QUEIROZ BARROS - CREA CE: 13.419-D

PROPRIETÁRIO: PREFEITURA MUNICIPAL DE IRACEMA

DESENHISTA: ISRAEL NISLAN

ARQUIVO: EST_CONC_GIN_IRAC_R2.DWG

ESCALA: INDICADA

DATA: _____

OUTUBRO / 2018