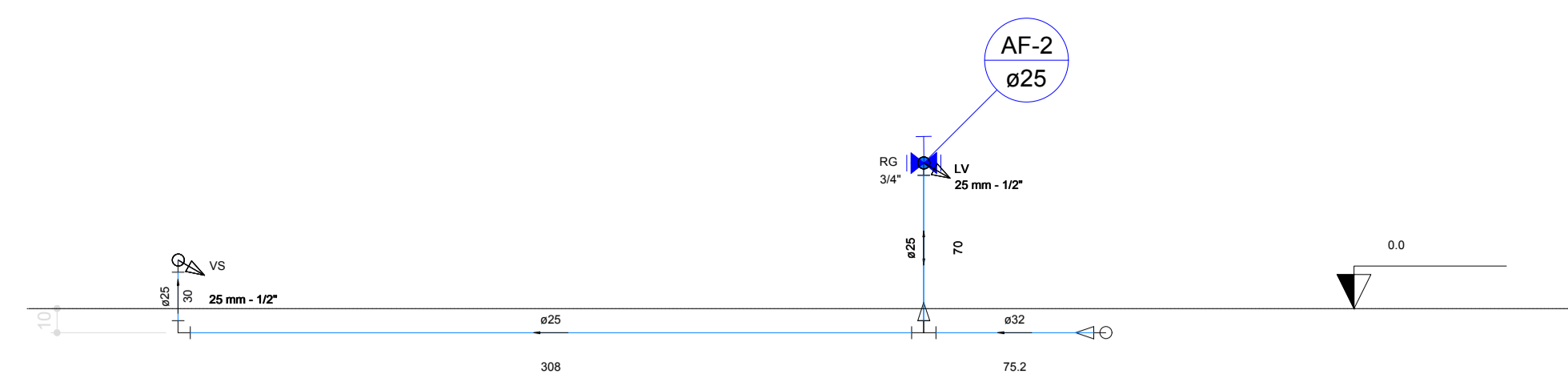
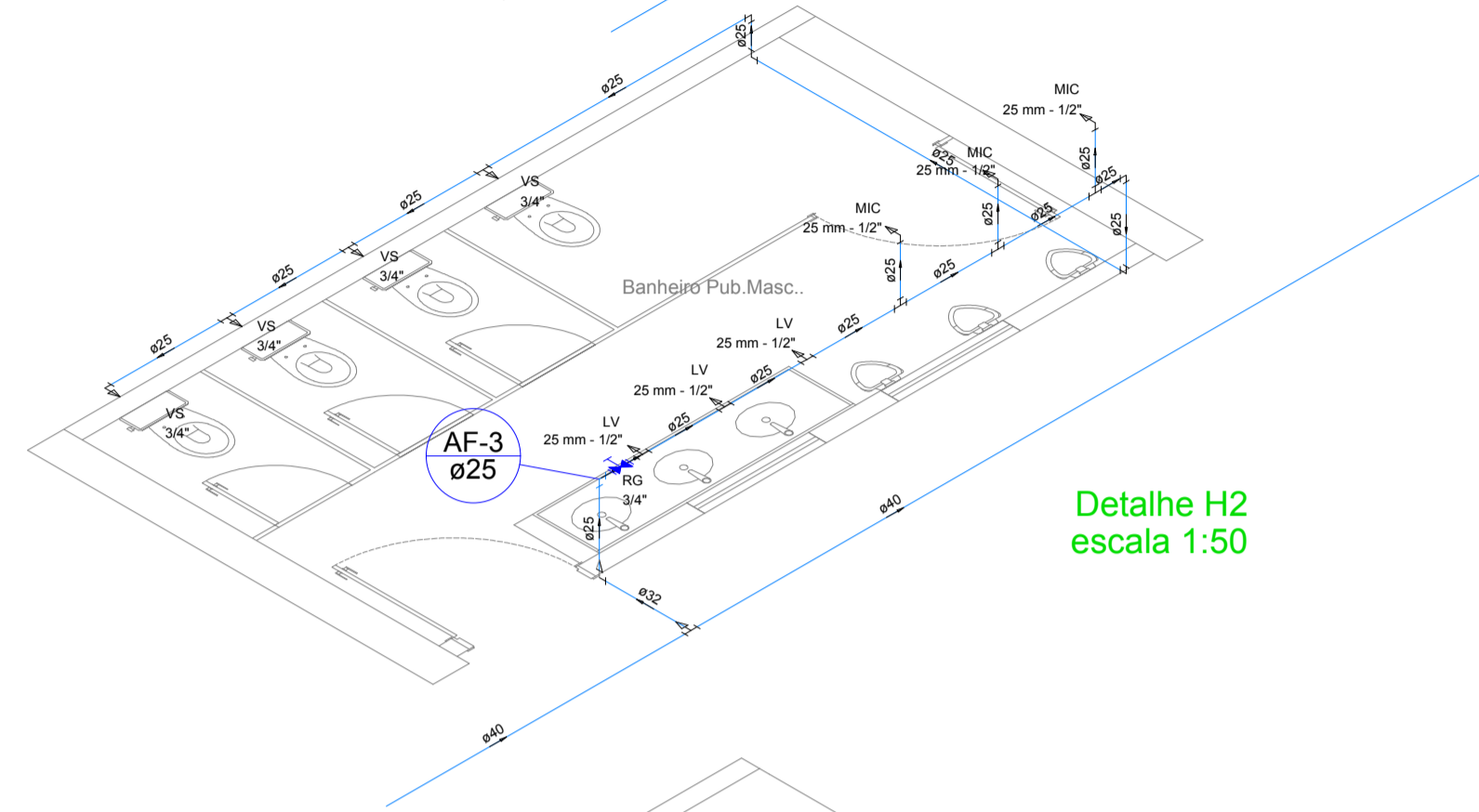


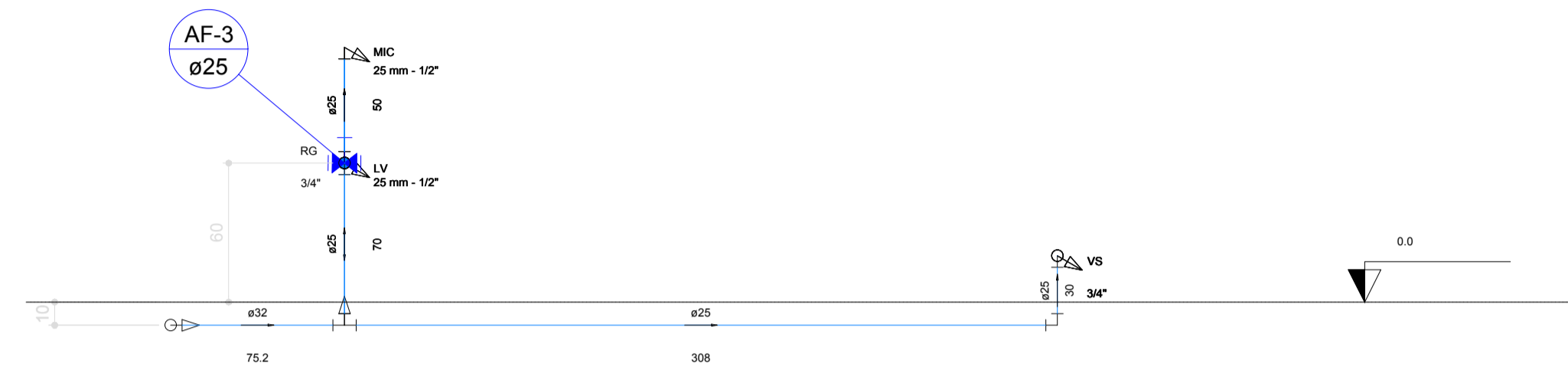
Detalhe H1
escala 1:50



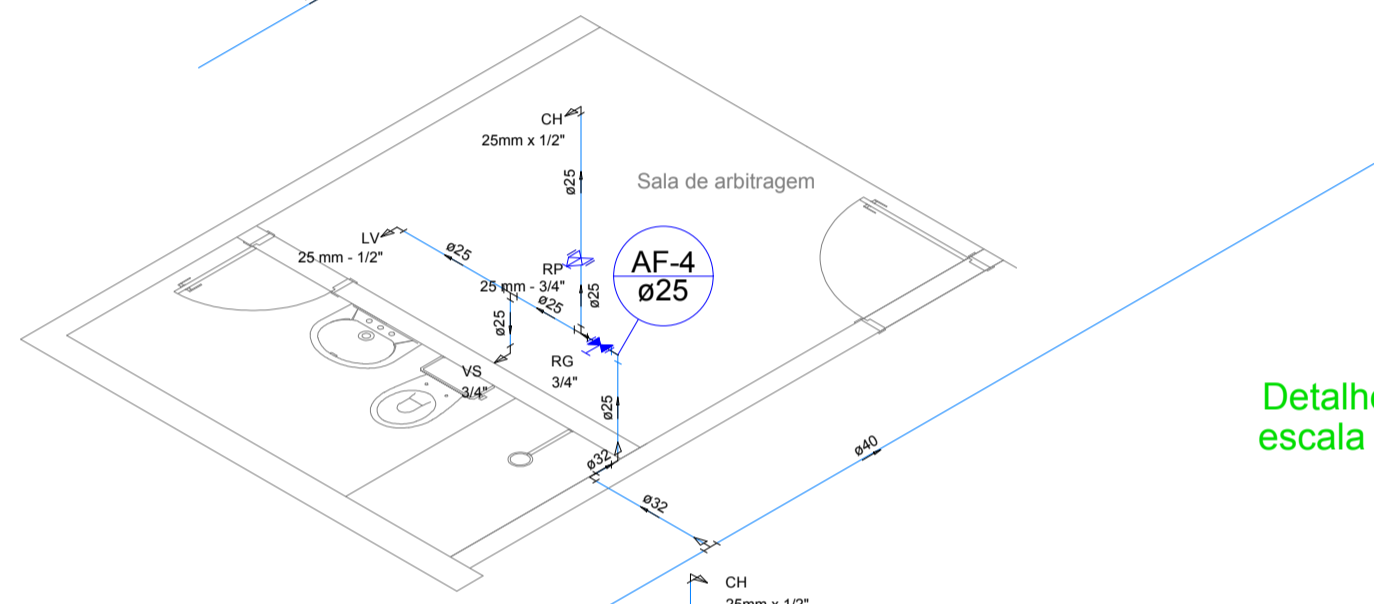
Corte C1
escala 1:25



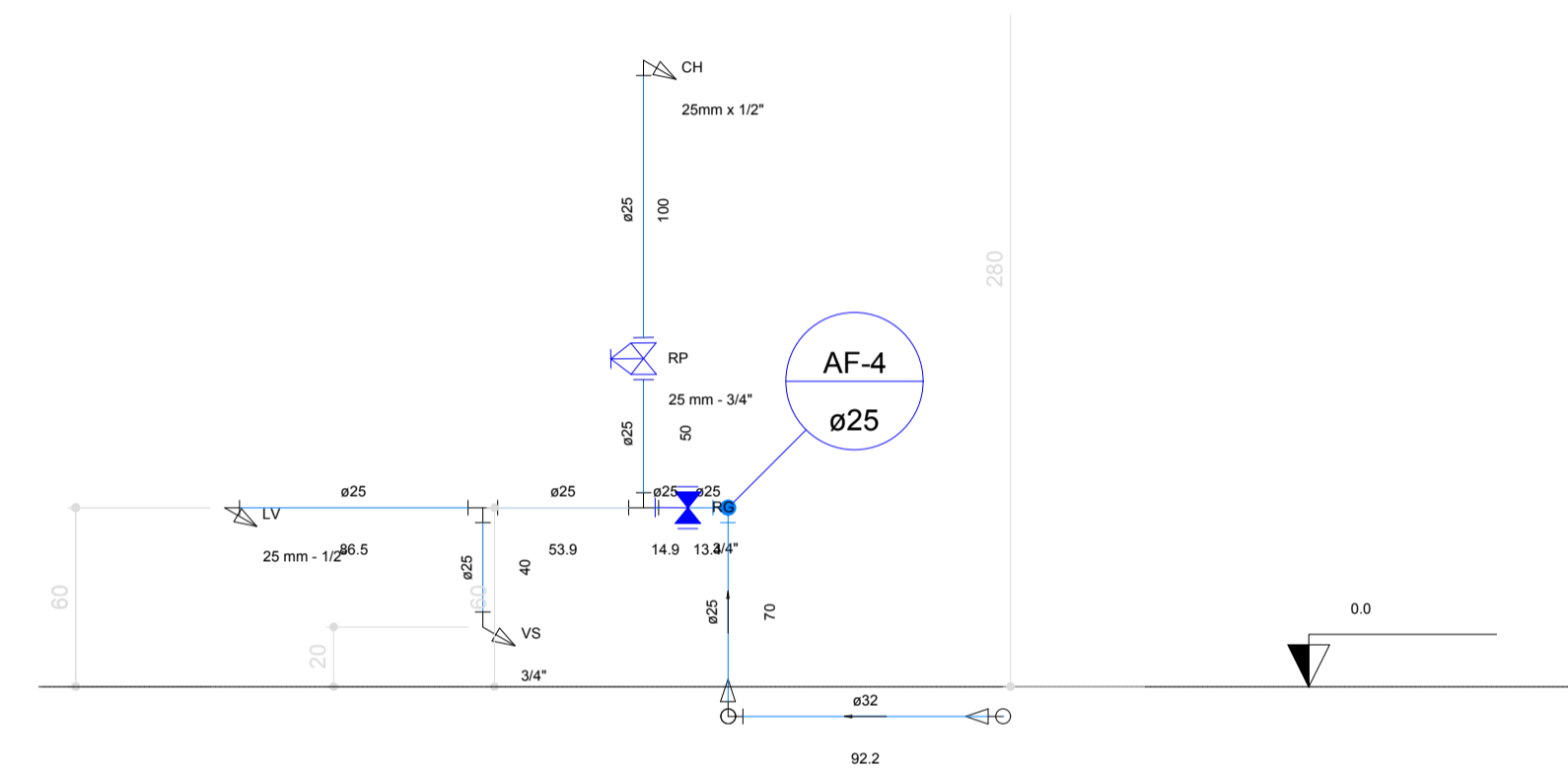
Detalhe H2
escala 1:50



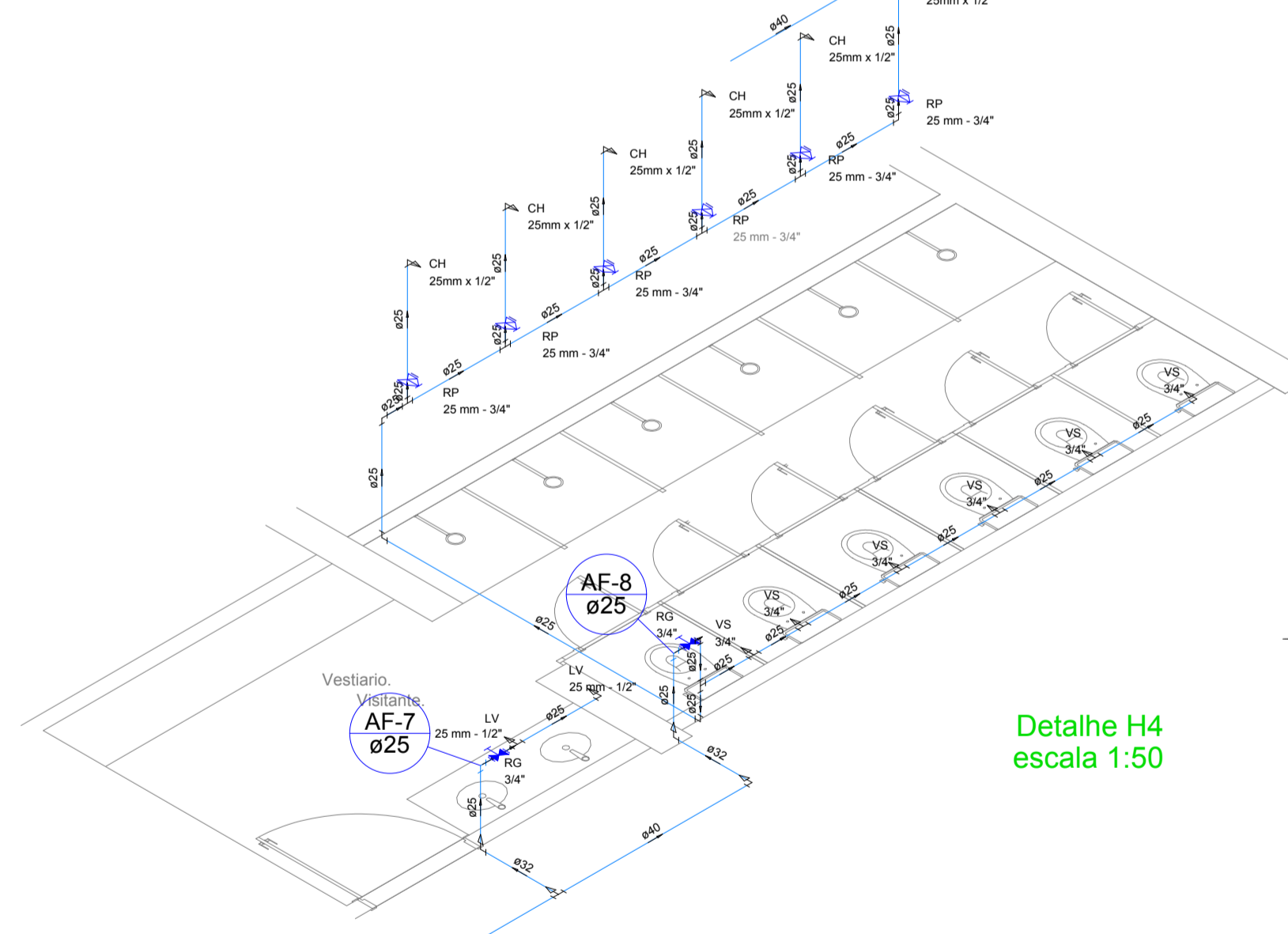
Corte C2
escala 1:25



Detalhe H3
escala 1:50



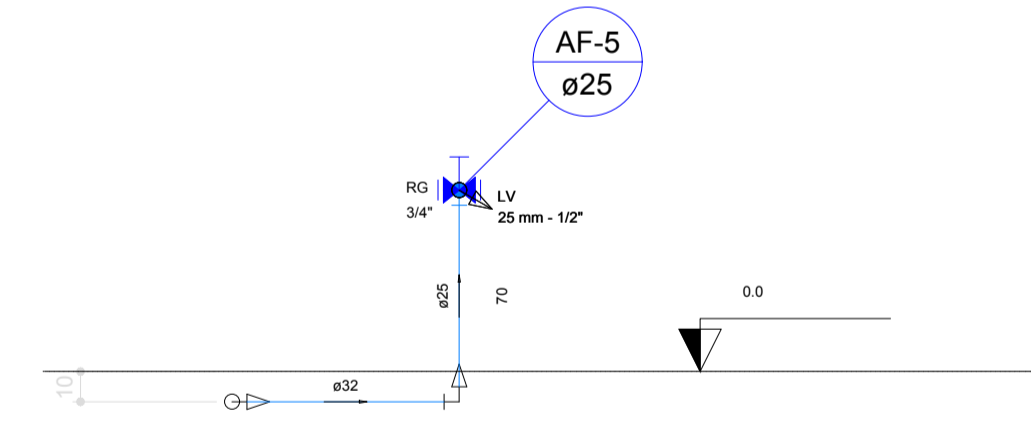
Corte C3
escala 1:25



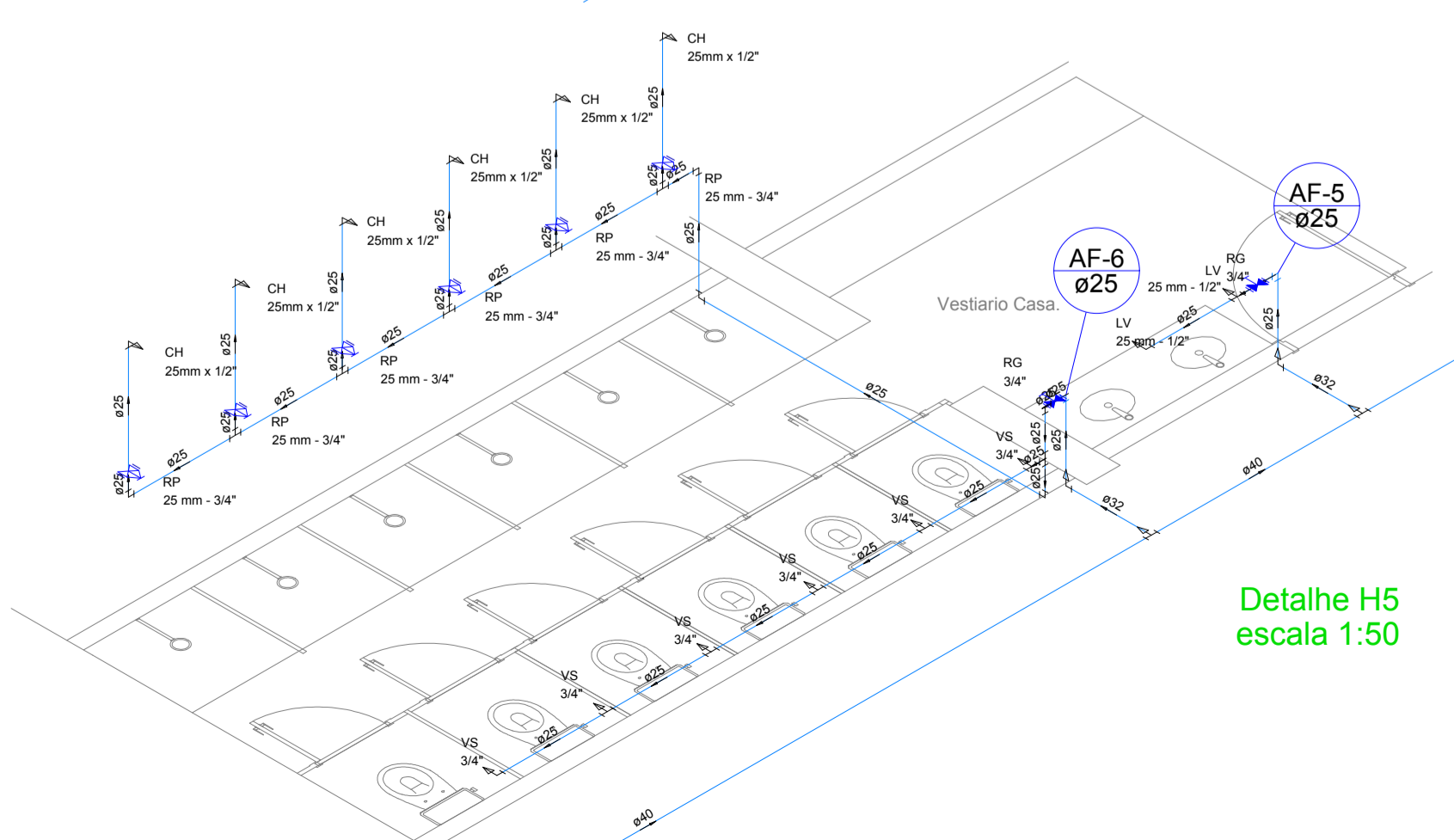
Detalhe H4
escala 1:50



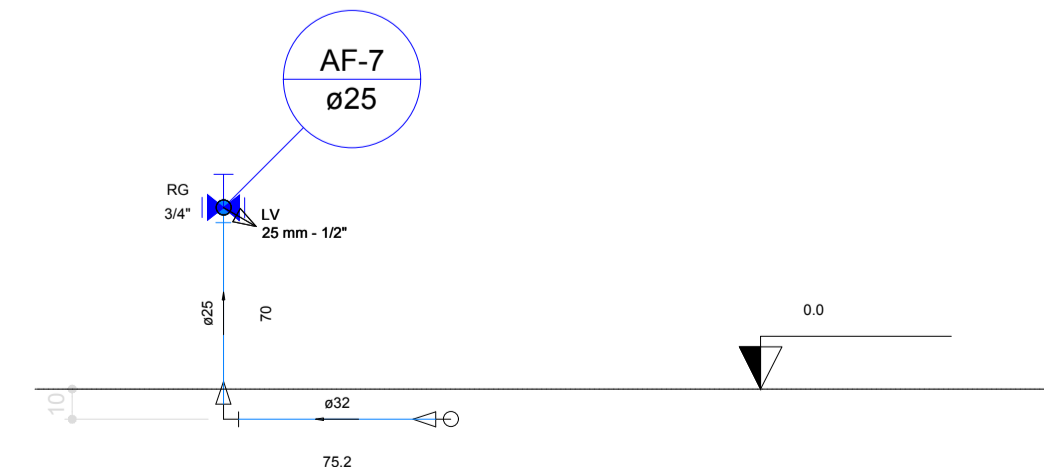
Corte C4
escala 1:25



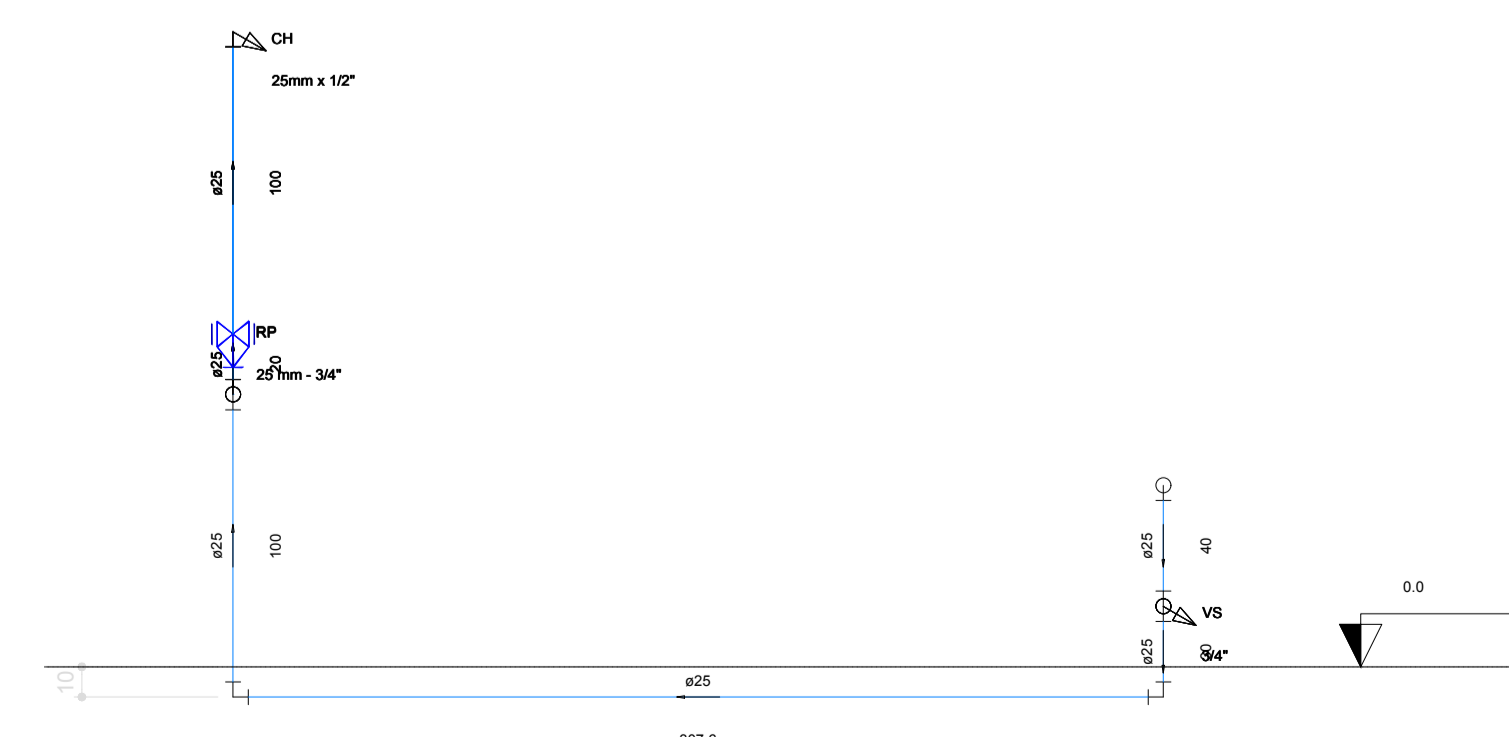
Corte C5
escala 1:25



Detalhe H5
escala 1:50



Corte C6
escala 1:25



Corte C7
escala 1:25

APROVAÇÃO:	
PROPRIETÁRIO	FISCALIZAÇÃO
 PROJETA	
PREFEITURA MUNICIPAL DE IRACEMA CONSTRUÇÃO DE GINÁSIO NA SEDE DO MUNICÍPIO DE IRACEMA-CE INSTALAÇÕES HIDRÁULICAS NÍVEL - 1.00m DETALHES ISOMÉTRICOS E CORTES	
LOCAL: RUA GERVÁSIO HOLANDA GUERRA - IRACEMA - CEARÁ	DESENHO: 01/01
PROJETA: CLAUDIO JOSÉ QUEIROZ BARROS - CREA CE: 13.419 D	FRANCA Nº: 02/03
PROPRIETÁRIO: PREFEITURA MUNICIPAL DE IRACEMA	INDICADA: 
DESENHISTA: ISRAEL NISLAN	DATA:
ARQUIVO: GIN_IRACEMA_HD_R0.DWG	OUTUBRO / 2018