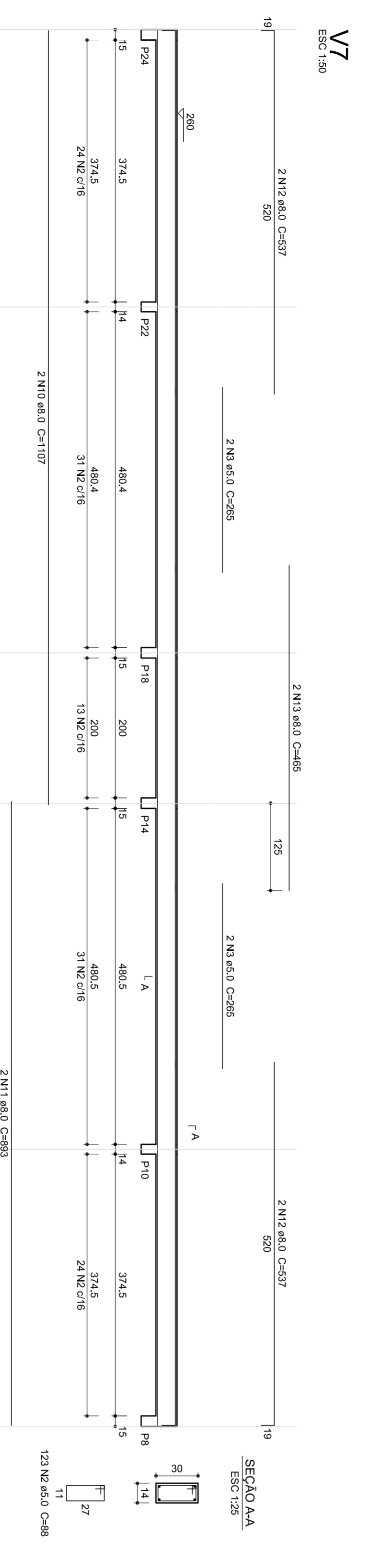


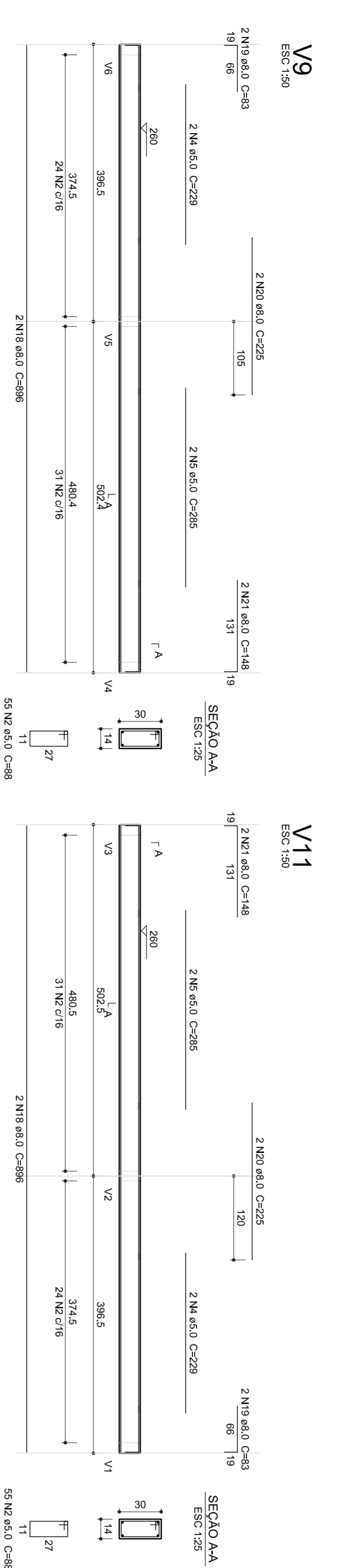
Relatório do aço

ACO	N	DIMEN	QUANT	UMT	COTURA
CA40	1	5,0	181	90	6120
CA40	2	5,0	181	90	6120
CA40	3	5,0	181	90	6120
CA40	4	5,0	181	90	6120
CA40	5	5,0	181	90	6120
CA40	6	5,0	181	90	6120
CA40	7	5,0	181	90	6120
CA40	8	5,0	181	90	6120
CA40	9	5,0	181	90	6120
CA40	10	5,0	181	90	6120
CA40	11	5,0	181	90	6120
CA40	12	5,0	181	90	6120
CA40	13	5,0	181	90	6120
CA40	14	5,0	181	90	6120
CA40	15	5,0	181	90	6120
CA40	16	5,0	181	90	6120
CA40	17	5,0	181	90	6120
CA40	18	5,0	181	90	6120
CA40	19	5,0	181	90	6120
CA40	20	5,0	181	90	6120
CA40	21	5,0	181	90	6120
CA40	22	5,0	181	90	6120



Relatório do aço

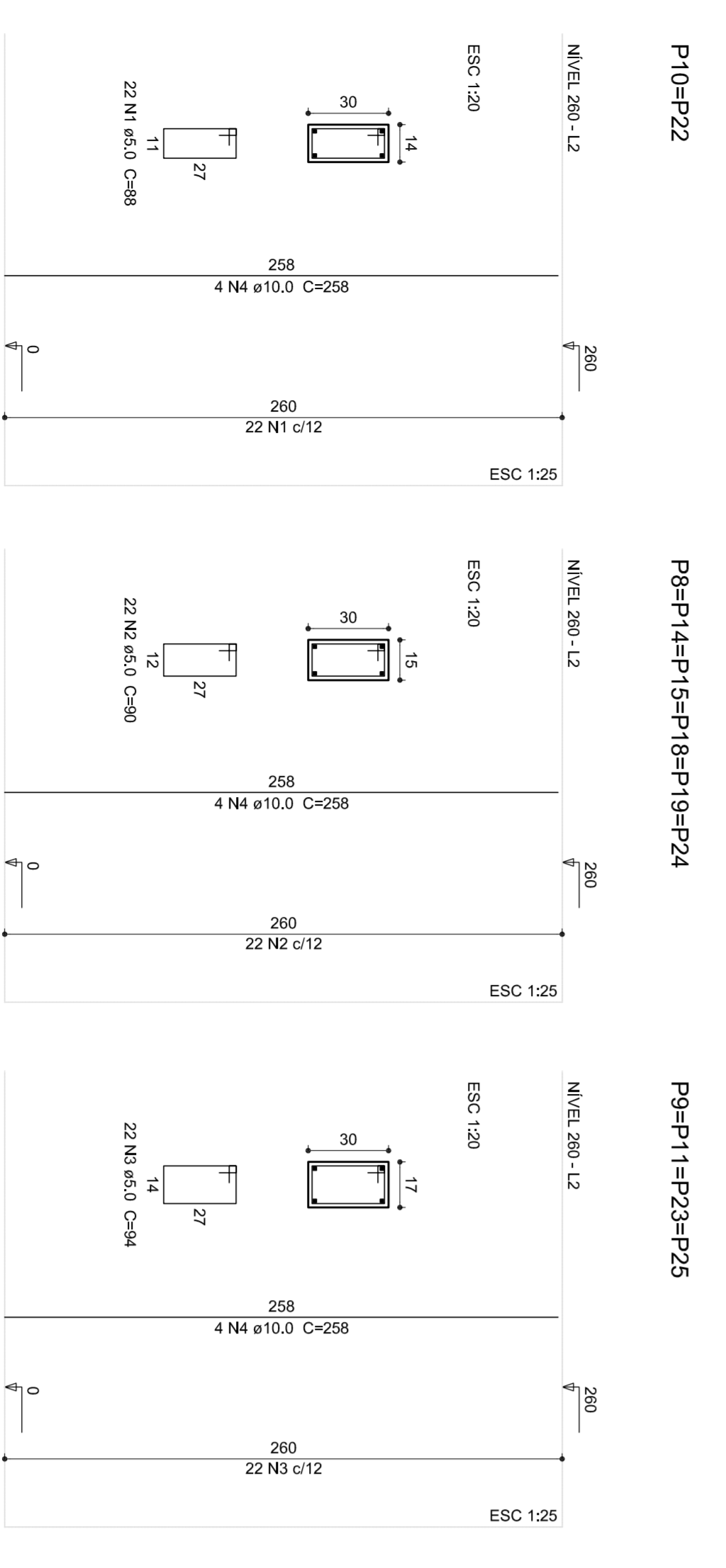
ACO	N	DIMEN	QUANT	UMT	COTURA
CA40	1	5,0	181	90	6120
CA40	2	5,0	181	90	6120
CA40	3	5,0	181	90	6120
CA40	4	5,0	181	90	6120
CA40	5	5,0	181	90	6120
CA40	6	5,0	181	90	6120
CA40	7	5,0	181	90	6120
CA40	8	5,0	181	90	6120
CA40	9	5,0	181	90	6120
CA40	10	5,0	181	90	6120
CA40	11	5,0	181	90	6120
CA40	12	5,0	181	90	6120
CA40	13	5,0	181	90	6120
CA40	14	5,0	181	90	6120
CA40	15	5,0	181	90	6120
CA40	16	5,0	181	90	6120
CA40	17	5,0	181	90	6120
CA40	18	5,0	181	90	6120
CA40	19	5,0	181	90	6120
CA40	20	5,0	181	90	6120
CA40	21	5,0	181	90	6120
CA40	22	5,0	181	90	6120



Composições das armaduras

Armadura	200	25000
V1	181	90
V2	181	90
V3	181	90
V4	181	90
V5	181	90
V6	181	90
V7	181	90
V8	181	90
V9	181	90
V10	181	90
V11	181	90

1 VIGAS NIVEL 260
ESCALA 1/25



Relatório do aço

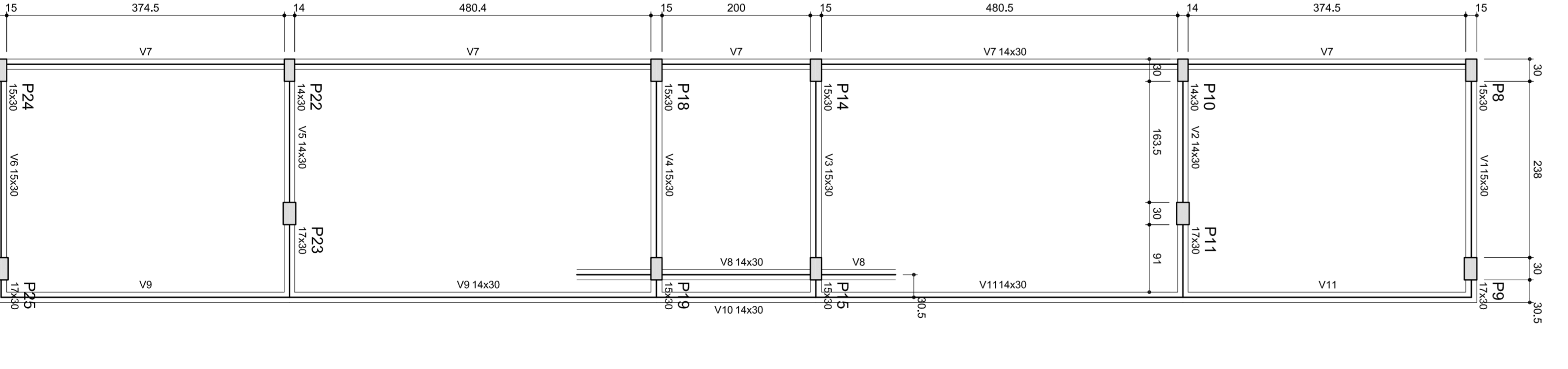
ACO	N	DIMEN	QUANT	UMT	COTURA
CA40	1	5,0	181	90	6120
CA40	2	5,0	181	90	6120
CA40	3	5,0	181	90	6120
CA40	4	5,0	181	90	6120
CA40	5	5,0	181	90	6120
CA40	6	5,0	181	90	6120
CA40	7	5,0	181	90	6120
CA40	8	5,0	181	90	6120
CA40	9	5,0	181	90	6120
CA40	10	5,0	181	90	6120
CA40	11	5,0	181	90	6120
CA40	12	5,0	181	90	6120
CA40	13	5,0	181	90	6120
CA40	14	5,0	181	90	6120
CA40	15	5,0	181	90	6120
CA40	16	5,0	181	90	6120
CA40	17	5,0	181	90	6120
CA40	18	5,0	181	90	6120
CA40	19	5,0	181	90	6120
CA40	20	5,0	181	90	6120
CA40	21	5,0	181	90	6120
CA40	22	5,0	181	90	6120

2 PILARES NIVEL 260
ESCALA 1/25

Relatório do aço

ACO	N	DIMEN	QUANT	UMT	COTURA
CA40	1	5,0	181	90	6120
CA40	2	5,0	181	90	6120
CA40	3	5,0	181	90	6120
CA40	4	5,0	181	90	6120
CA40	5	5,0	181	90	6120
CA40	6	5,0	181	90	6120
CA40	7	5,0	181	90	6120
CA40	8	5,0	181	90	6120
CA40	9	5,0	181	90	6120
CA40	10	5,0	181	90	6120
CA40	11	5,0	181	90	6120
CA40	12	5,0	181	90	6120
CA40	13	5,0	181	90	6120
CA40	14	5,0	181	90	6120
CA40	15	5,0	181	90	6120
CA40	16	5,0	181	90	6120
CA40	17	5,0	181	90	6120
CA40	18	5,0	181	90	6120
CA40	19	5,0	181	90	6120
CA40	20	5,0	181	90	6120
CA40	21	5,0	181	90	6120
CA40	22	5,0	181	90	6120

3 FORMA DO PAVIMENTO NIVEL 260
ESCALA 1/50



Forma do pavimento Nivel 260
escala 1:50

BRASIL Ministério da Educação **FNDE** Fundação Nacional de Desenvolvimento

PROJETO PADRÃO - FNDE

QUADRA ESCOLAR COBERTA E VESTIÁRIO

PROJETO ESTRUTURAL

FORMA DO PAVIMENTO NIVEL 260

SCO

05/05